



**Performance Charge Pipe Kit  
(Lower Hot Side and Cold Side)  
Part Number: 17-152**

**Mazda 2004-2005 Mazdaspeed Miata 1.8L Turbo**

**Installation Instructions**

For technical inquiries please email us at [tech@hpsperformance.com](mailto:tech@hpsperformance.com)

In the email, please include the following information for faster response:

- Year / Make / Model / Engine of your vehicle.
- If it is a fitment issue, please include pictures showing the fitment problem.
- If there are missing parts, please list the part number(s) from the bill of materials on the 2nd page.
- Optional but recommended – Your contact phone number and preferred call back time.

You can also give us a call via 626-747-9200 for tech support Monday-Friday, 9:00am-5:00pm Pacific Time.

# Bill of Materials

## Kit Number: 17-152

Line #	Description	Part Number	Qty
1	Hot Side Charge Pipe, Driver Side	529-936	1
2	Cold Side Charge Pipe, Passenger Side	529-937	1
3	Charge Pipe Bracket, "Z"	530-22	1
4	Charge Pipe Bracket, "L"	530-921	1
5	Silicone Reducer, 2.12" to 2.25"	HTSR-212-225-BLK	2
6	Silicone Reducer, 1.75" to 2.25"	HTSR-175-225-BLK	1
7	Embossed Clamp, 50mm to 70mm	EMSC-50-70	6
8	Embossed Clamp, 40mm to 60mm	EMSC-40-60	1
9	Bolt, M6 x 1.0, 25mm Long	HW-B6-25	1
10	Bolt, M6 x 1.0, 12mm Long	HW-B6-12	2
11	M6 Flange Nut	HW-N6	2
12	M6 Flat Washer 16mm OD	HW-FW6L	5
13	Rubber Vibration Mount M6 5/8" Tall, Male to Female	HW-RM6-62-MF	1

- **Before installing any parts of this charge pipe kit, please read the instructions thoroughly.**
- **Verify the contents of this charge pipe kit before disassembling your vehicle.**
- **Report any defective or missing parts to HPS directly. The HPS dealer you purchased this product from might not have the replacement parts you need.**
- **Installation requires moderate mechanical skills. A qualified mechanic is highly recommended.**
- **Do not attempt to install the charge pipe kit while the engine is hot.**
- **This installation may require the removal of coolant lines that may be hot.**
- **For technical inquiries, please email us at [tech@hpsperformance.com](mailto:tech@hpsperformance.com)**

## **PLEASE READ CAREFULLY BEFORE INSTALLATION!**

This installation is not for the novice customer. Install this product with **EXTREME** caution! Misuse of this product can destroy your engine! If you are not mechanically inclined, please have a professional automotive mechanic install this kit.

**NOTE: HPS holds no responsibility for any engine damage that results from misuse of this product.**

## **GETTING STARTED**

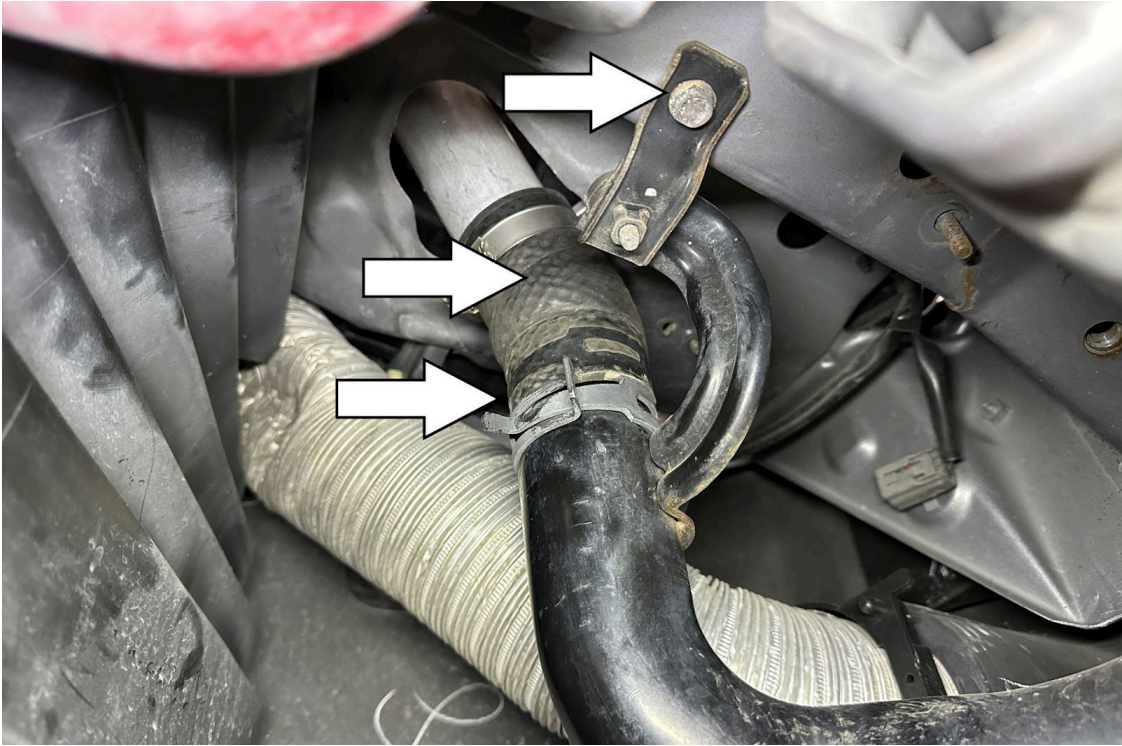
1. Turn the ignition OFF and disconnect both of the vehicle's battery's negative cables . If the engine has run within the past two hours let it cool down.

NOTE: Disconnecting the negative battery cable erases pre-programmed electronic memories. Write down all memory settings before disconnecting the negative battery cable. Some radios will require an anti-theft code to be entered after the battery is reconnected. The anti-theft code is typically supplied with your owner's manual. In the event your vehicle's anti-theft code cannot be recovered, contact an authorized dealership to obtain your vehicle's anti-theft code. We also highly recommend NOT discarding any stock parts after the installation.

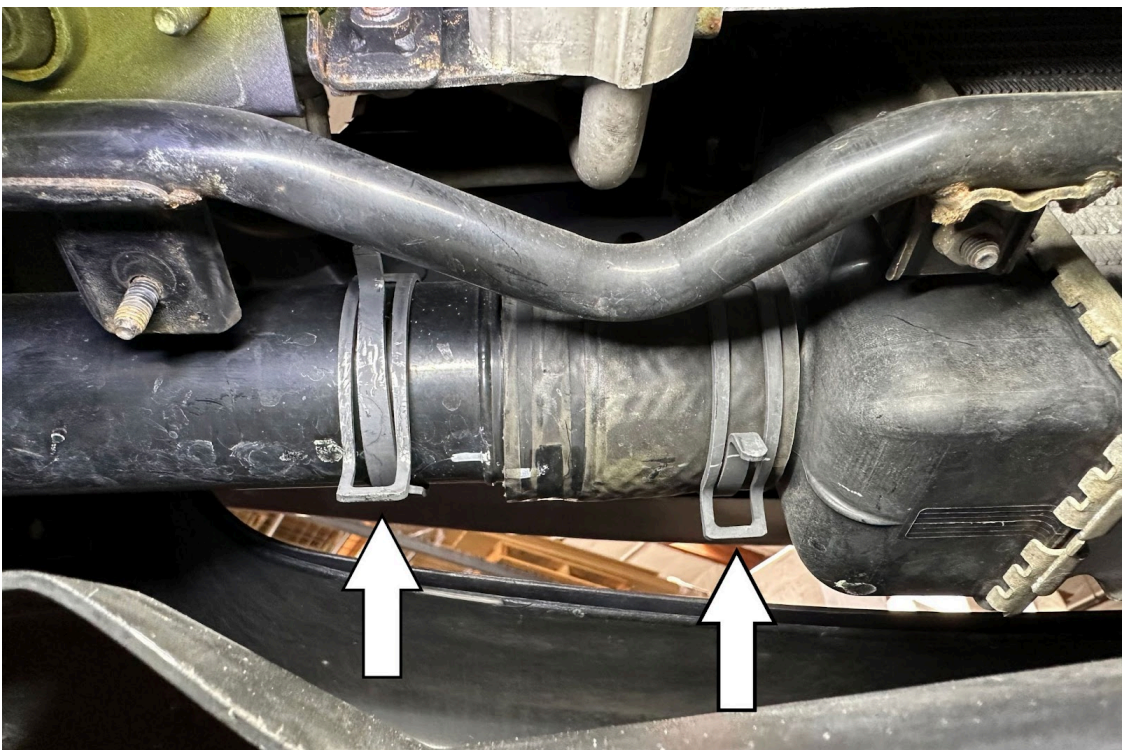


2. Remove the three screws holding the front splash shield under the driver side of the car and move the splash shield out of the way.



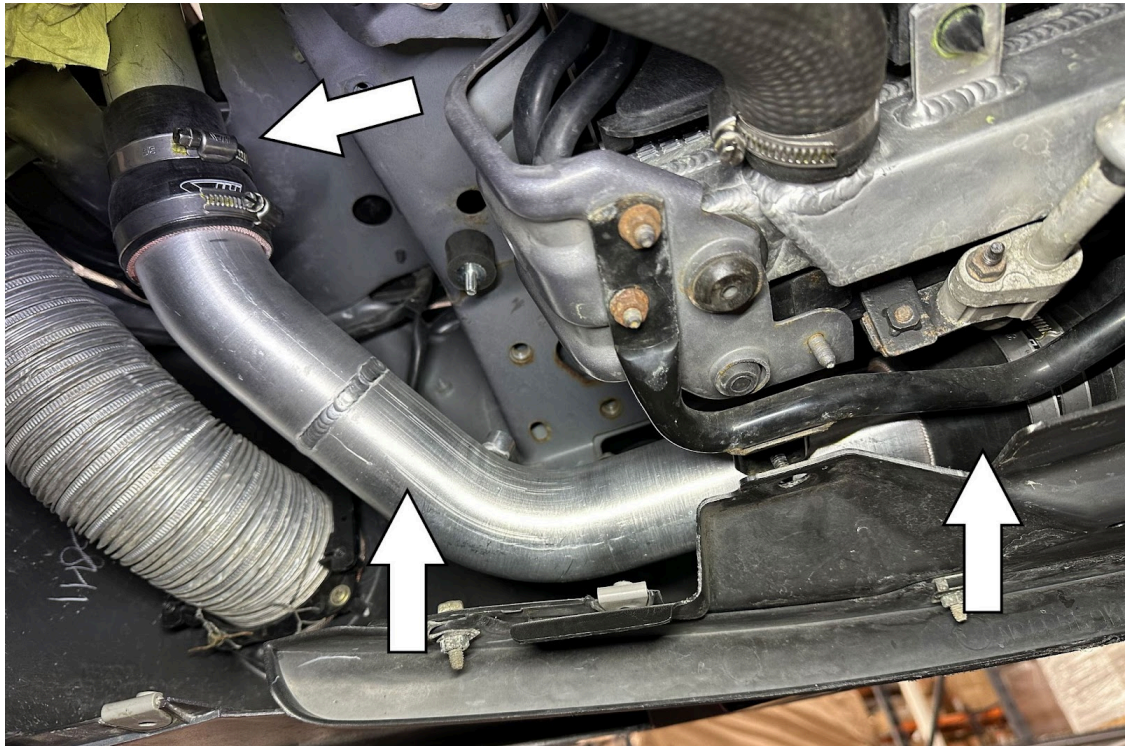


3. Remove the charge pipe clamps, coupler, and charge pipe mount.

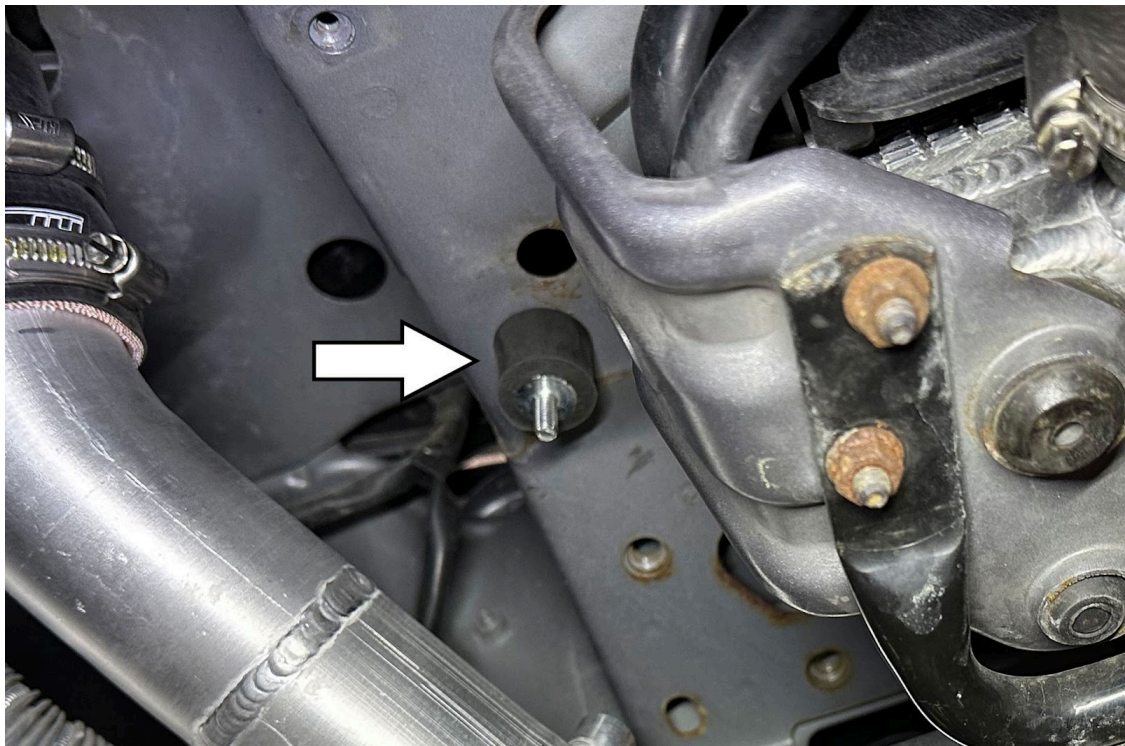


4. Remove the charge pipe clamps and coupler on the other end.



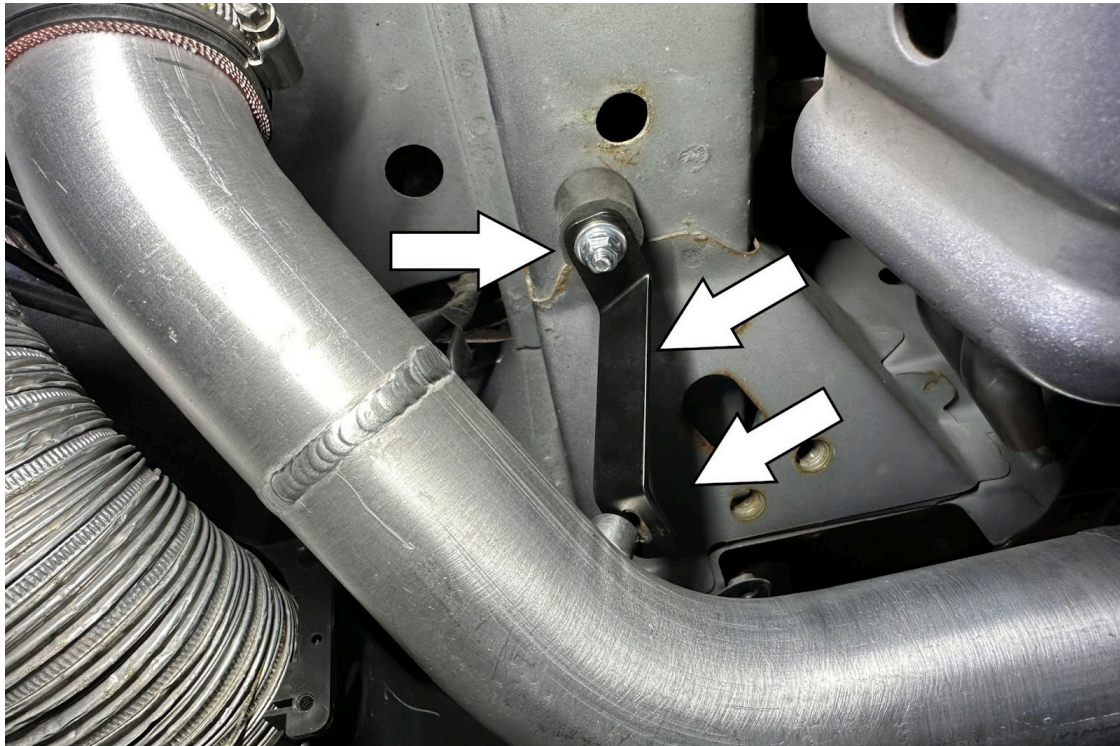


5. Install the HPS hot side charge pipe using the provided reducer couplers and EMSC clamps as shown above.



6. Secure the provided vibration mount to the frame as shown above.



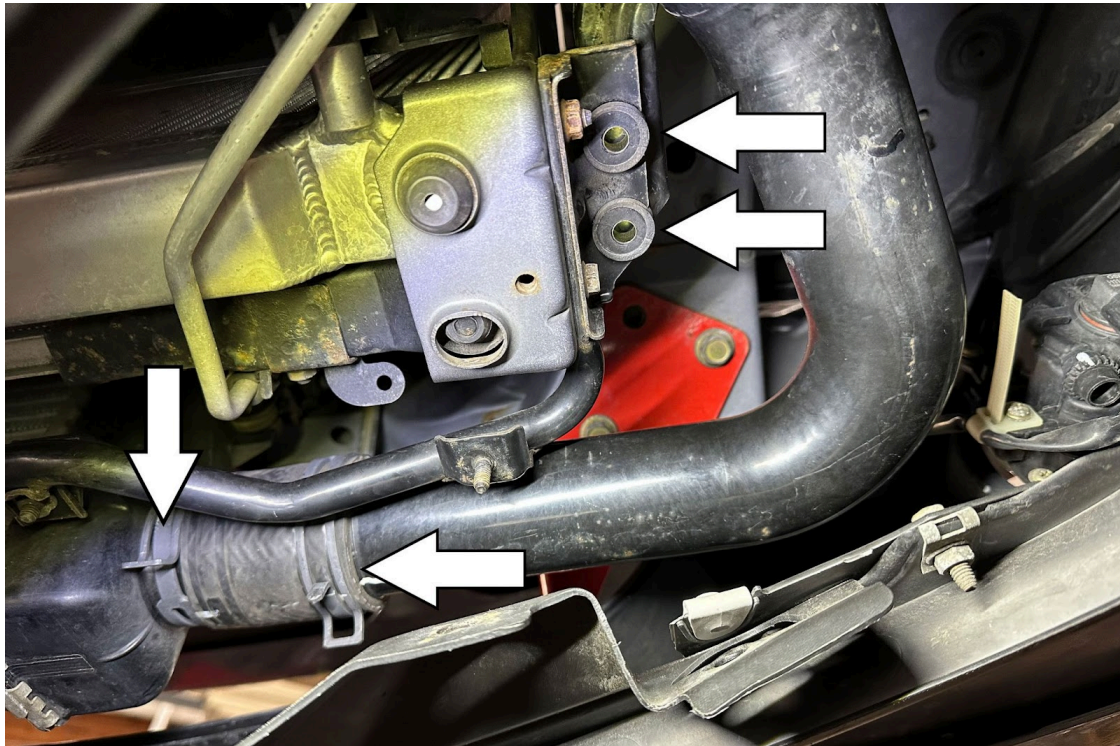


7. Install the "Z" bracket onto the vibration mount and hot side charge pipe using the provided M6 nut, bolt, and washers.

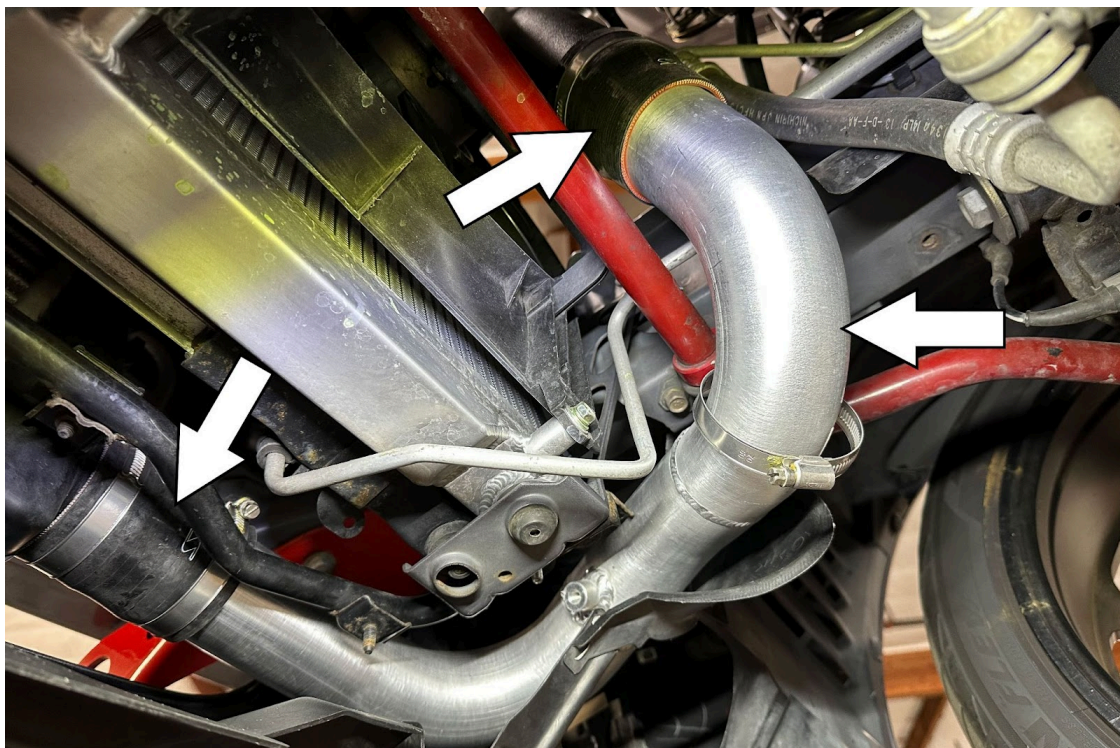


8. Move the passenger side splash shield out of the way by removing the three screws shown above.



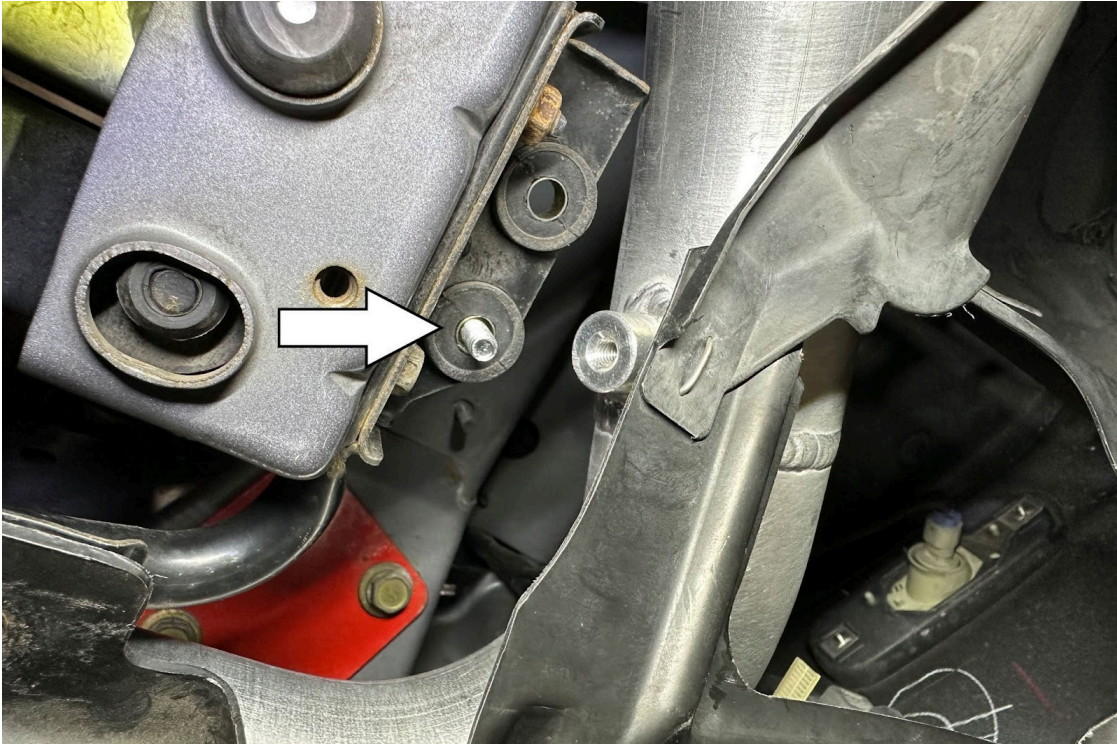


9. Remove the two clamps, coupler, two mounting bolts, and charge pipe from the vehicle.

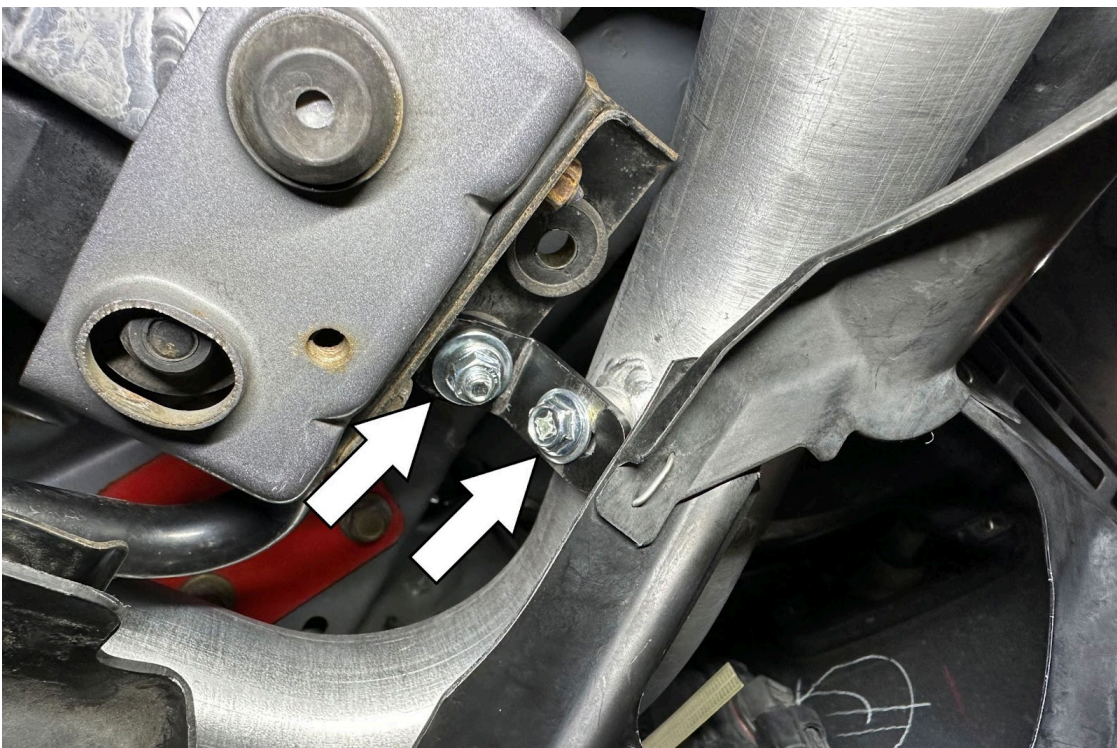


10. To install the HPS cold side charge pipe, Connect the top of the pipe to the existing hose and the bottom of the pipe to the intercooler using the provided reducer coupler and EMSC clamps.





11. Insert the long M6 bolt into the frontmost factory bushing for the charge pipe bracket.



12. Secure the short leg of the "L" bracket to the factory bushing and the longer leg of the bracket to the HPS charge pipe using the provided M6 bolts, nut, and washers.



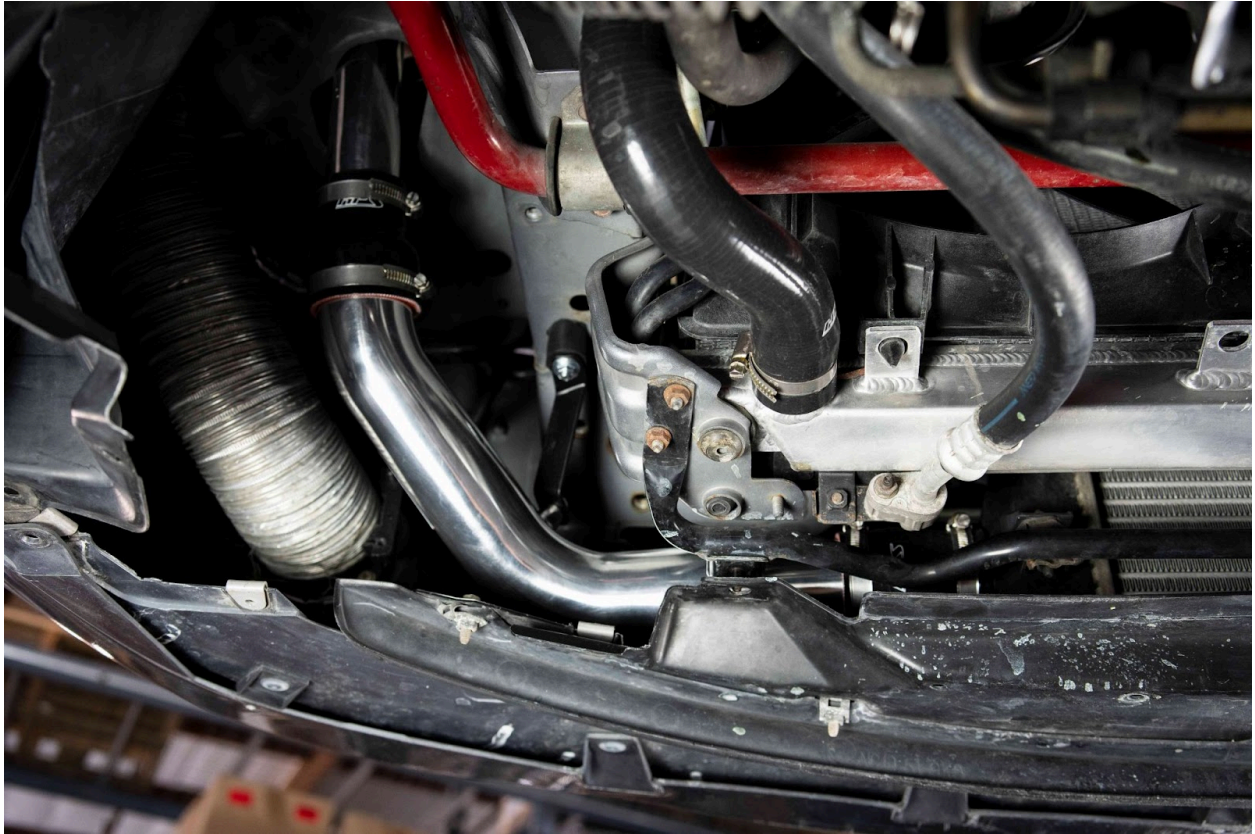
## **FINAL STEPS**

Once the charge pipe has been positioned, tighten all of the clamps and secure all of the parts.

Upon completion of the installation, reconnect the negative battery terminal before you start the engine. Double check to make sure everything is tight and properly positioned before starting the vehicle.

Start the engine. Let the car idle for 3 minutes. Perform a final inspection before driving. Listen carefully for any odd noises, rattles and/or air leaks prior to taking it for a test drive. If any problems arise go back and check the vacuum lines, hoses and clamps that may be causing leaks or rattles and correct the problem.

Periodically, recheck the alignment of the charge pipes and make sure there is proper clearance around and along the charge pipes. Failure to follow proper maintenance procedures may cause damage to the kit and will void the warranty.





**Also available for:**  
**Mazda 2004-2005 Mazdaspeed Miata 1.8L Turbo**



**HPS Performance Throttle Body Cold Side  
Charge Pipe**  
[Part Number 17-151](#)



**HPS Performance Air Filter Cleaning Kit**  
[Part Number HPS-AFRC](#)



**HPS Magnetic Drain Plug**  
[Part Number MDP-M14x150](#)

Contact an authorized HPS Performance dealer or  
visit us at [hpsperformance.com](http://hpsperformance.com) for more details