



## **Performance Air Intake Kit**

**Part Number: 827-727**

**Subaru 2022-2024 WRX 2.4L Turbo**

## **Installation Instructions**

For technical inquiries please email us at [tech@hpsperformanceproducts.com](mailto:tech@hpsperformanceproducts.com)

In the email, please include the following information for faster response:

- Year / Make / Model / Engine of your vehicle.
- If it is a fitment issue, please include pictures showing the fitment problem.
- If there are missing parts, please list the part number(s) from the bill of materials on the 2nd page.
- Optional but recommended – Your contact phone number and preferred call back time.

You can also give us a call via 626-747-9200 for tech support Monday-Friday, 9:00am-5:00pm Pacific Time.

# Bill of Materials

Kit Number: 827-727

Line #	Description	Part Number	Qty
1	Intake Tube	529-929	1
2	Heat Shield	531-930	1
3	Heat Shield Lid	531-935	1
4	"L" Bracket, Tall	530-309	1
5	Straight Bracket	530-579	1
6	"L" Bracket, Short	530-599	1
7	Air Filter	HPS-4276	1
8	3.00" Silicone Hump Coupler x 3" Length	P3SHC-300-L3	1
9	Embossed Hose Clamp	EMSC-70-90	2
10	M6 Vibration Mount x 1/2"	HW-RM6-50	1
11	M6 Flange Nut	HW-N6	5
12	M6 Flat Washer 16mm OD	HW-FW6L	10
13	Bolt, M6 x 1.0, 20mm Long	HW-B6-20	3
14	Bolt, M6 x 1.0, 12mm Long	HW-B6-12	2
15	Bolt, M5 x 0.8, 12mm Long	HW-B5-12	8
16	Bolt, M4 x 0.7, 8mm Long	HW-B4-8	2
17	Aluminum Unthreaded Spacer, 13 mm OD, 5 mm Long, for M6 Screw Size	94669A165	2
18	Thin Edge Trim	Thin Edge Trim	24 inches
19	MAF sleeve, no straightener 3" reduce to 2.75"	HW-VEN-300-275	1

- Before installing any parts of this intake kit, please read the instructions thoroughly.
- Verify the contents of this intake kit before disassembling your vehicle.
- DO NOT INSTALL IF ANY PARTS ARE MISSING OR DAMAGED. CONTACT [tech@hpsperformanceproducts.com](mailto:tech@hpsperformanceproducts.com) IMMEDIATELY. WE ARE NOT RESPONSIBLE FOR ANY DAMAGE CAUSED DUE TO IMPROPER INSTALLATION.
- Installation requires moderate mechanical skills. A qualified mechanic is highly recommended.
- Do not attempt to install the intake kit while the engine is hot.
- This installation may require removal of coolant lines that may be hot.
- For technical inquiries, please email us at [tech@hpsperformanceproducts.com](mailto:tech@hpsperformanceproducts.com)

## **PLEASE READ CAREFULLY BEFORE INSTALLATION!**

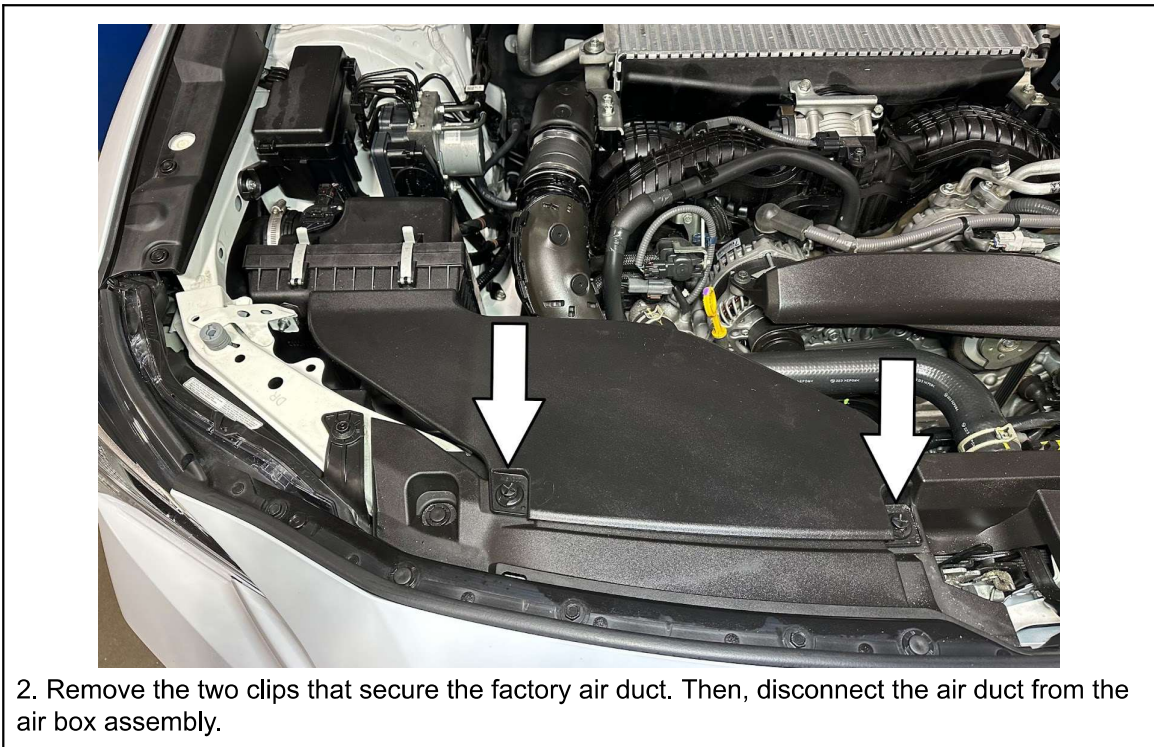
This installation is not for the novice customer. Install this product with EXTREME caution! Misuse of this product can destroy your engine! If you are not mechanically inclined, please have a professional automotive mechanic install this kit.

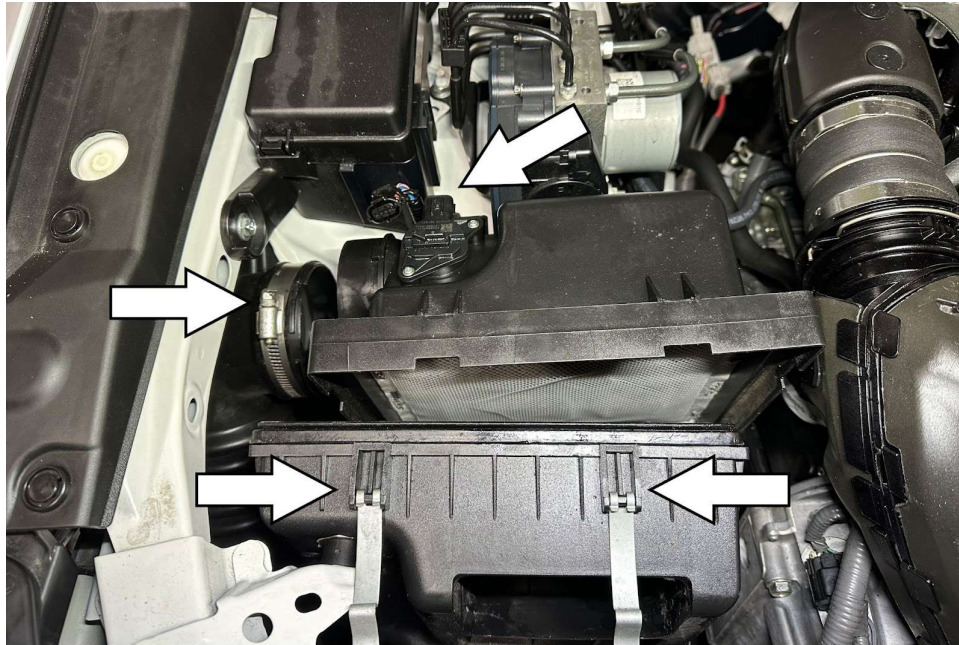
**NOTE: HPS holds no responsibility for any engine damage that results from misuse of this product.**

## **GETTING STARTED**

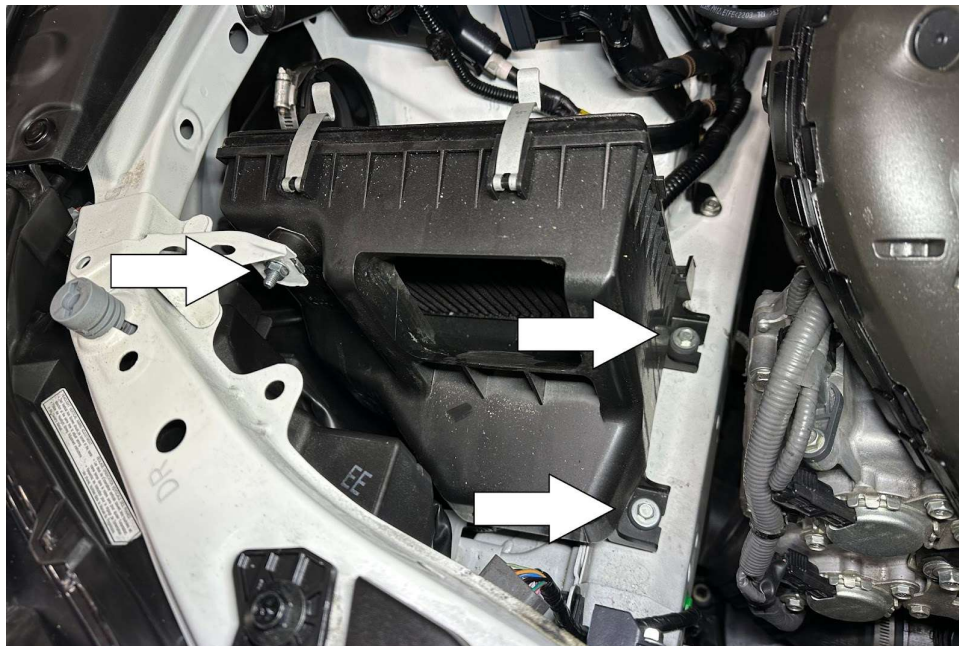
1. Turn the ignition OFF and disconnect the vehicle's negative battery cable. If the engine has run within the past two hours let it cool down.

NOTE: Disconnecting the negative battery cable erases pre-programmed electronic memories. Write down all memory settings before disconnecting the negative battery cable. Some radios will require an anti-theft code to be entered after the battery is reconnected. The anti-theft code is typically supplied with your owner's manual. In the event your vehicle's anti-theft code cannot be recovered, contact an authorized dealership to obtain your vehicle's anti-theft code. We also highly recommend NOT discarding any stock parts after the installation.

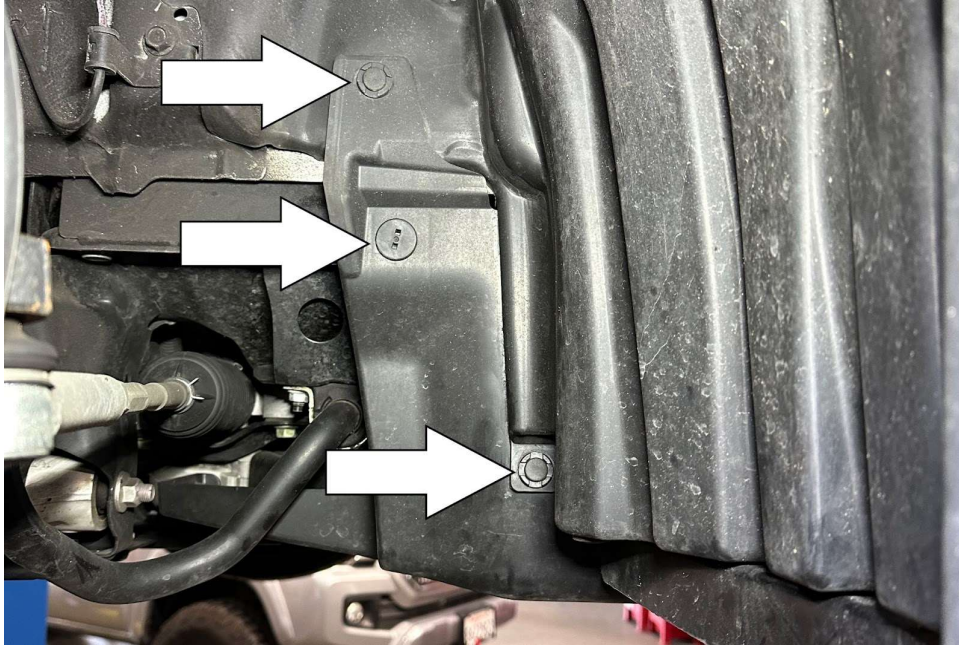




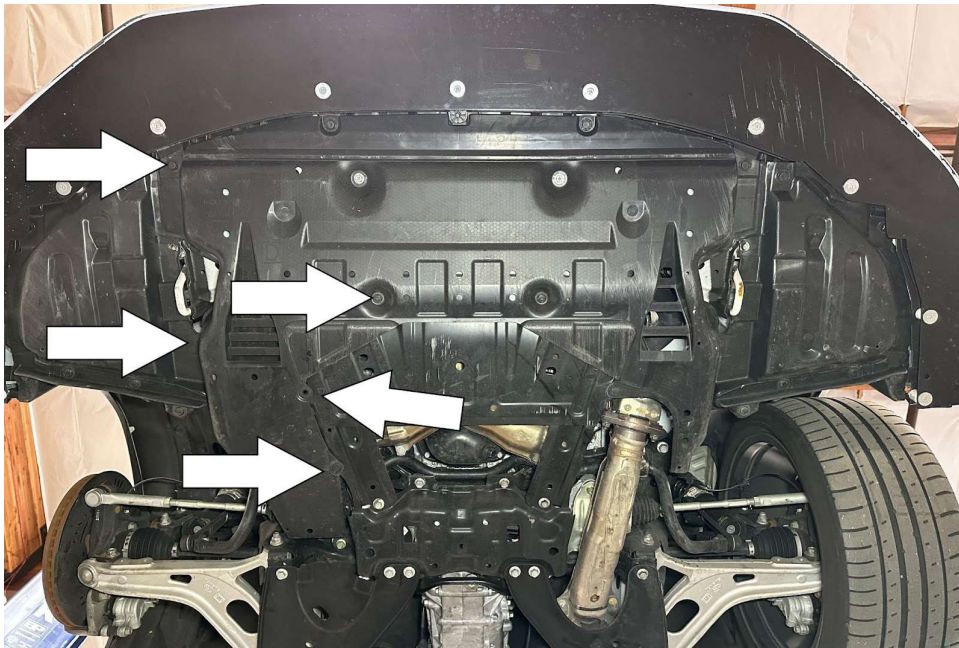
3. Disconnect the retaining clips securing the two halves of the air box assembly. Unplug the mass air flow sensor harness connector. Loosen the hose clamp securing the intake tube from the air box and remove the airbox from the vehicle.



4. Loosen the two bolts and the one nut securing the air filter housing and remove it from the vehicle.



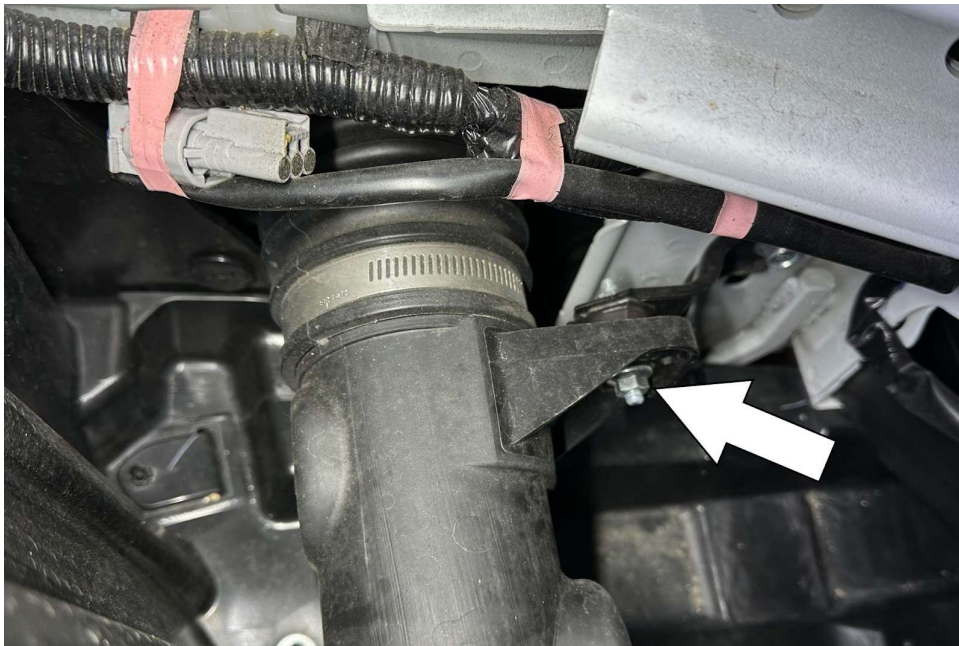
5. Behind the front passenger wheel, uninstall the three plastic clips securing the underbody panel.



6. Remove the plastic clips securing the underbody panel shown in the image above.



7. Partially uninstall the undertray to give yourself some clearance before uninstalling the lower portion of the intake.



8. Locate the lower intake tube mount and remove the nut securing the intake tube from the rubber isolator mount.



9. Loosen the hose clamp securing the intake tube to the turbocharger inlet, then remove the intake tube from the vehicle.



10. Loosen the nut to remove the rubber isolator from the vehicle.

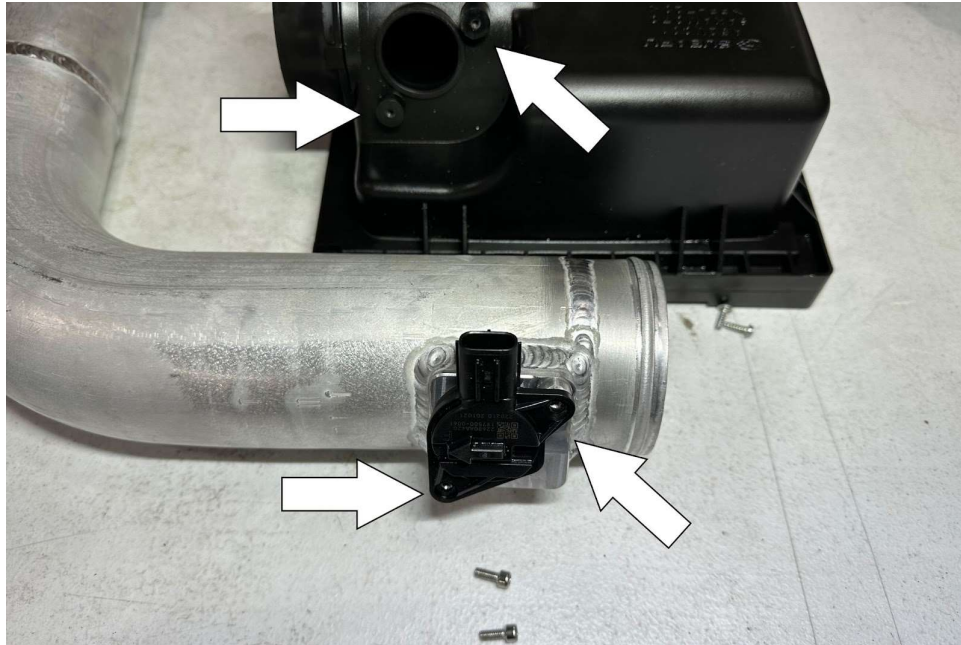




11. Fasten the shorter “L” bracket onto the provided rubber vibration mount (1) using a M6 nut (1) and M6 washer (1) onto the longer side of the bracket.



12. Install the rubber vibration mount onto the factory lower intake mount. Secure it using a provided M6 nut (1) and M6 washer (1).



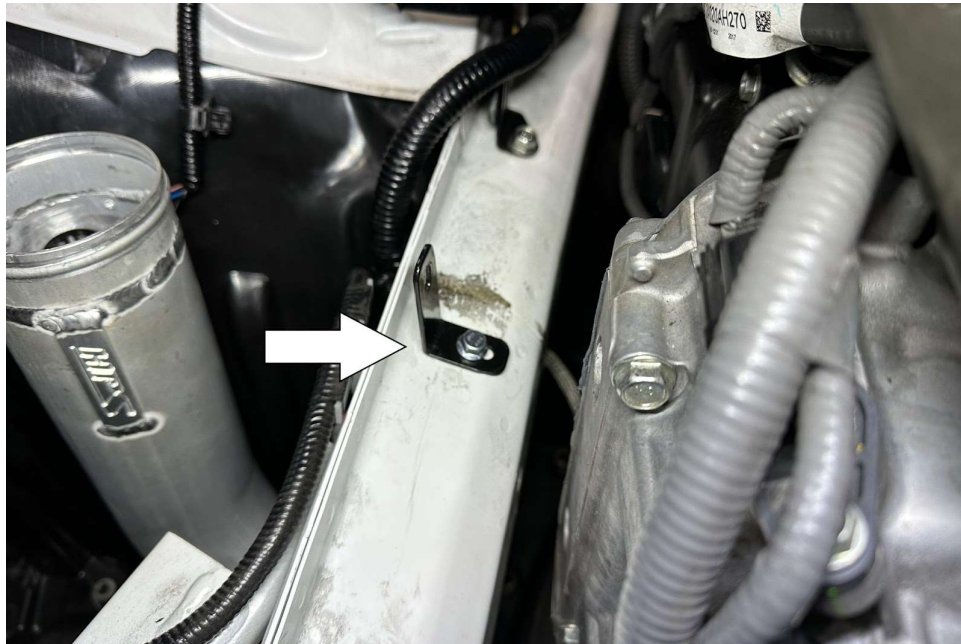
13. Remove the MAF sensor from the factory air box and secure the sensor onto the HPS intake tube using the provided M4 Allen bolts (2).



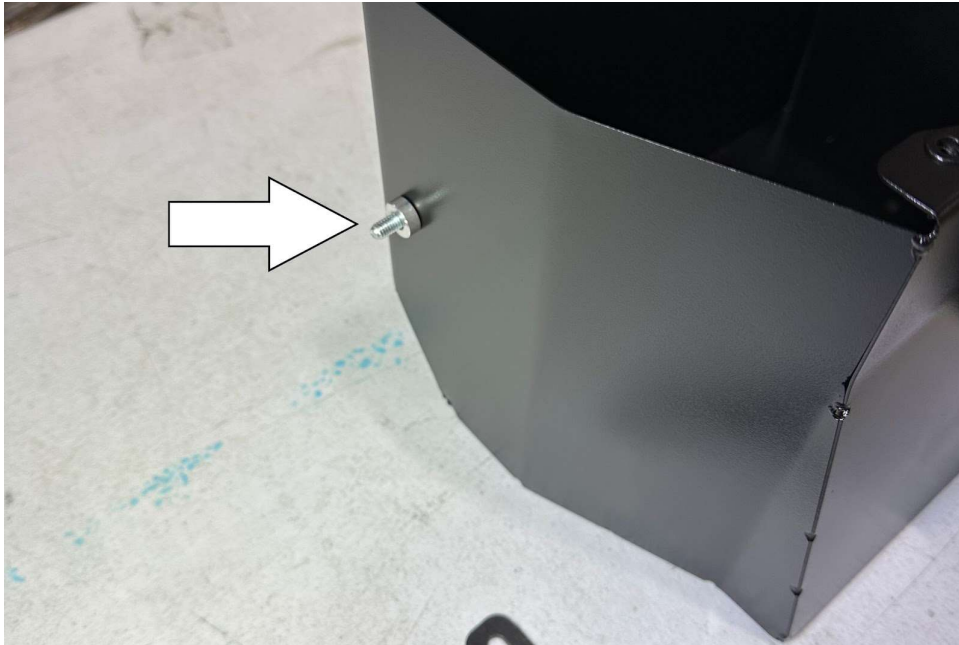
14. Insert and secure the provided hump coupler onto the turbocharger inlet. Next, loosely place the remaining clamp onto the opposite side of the hump coupler and insert the HPS intake pipe. Do not fasten the second clamp until the next step.



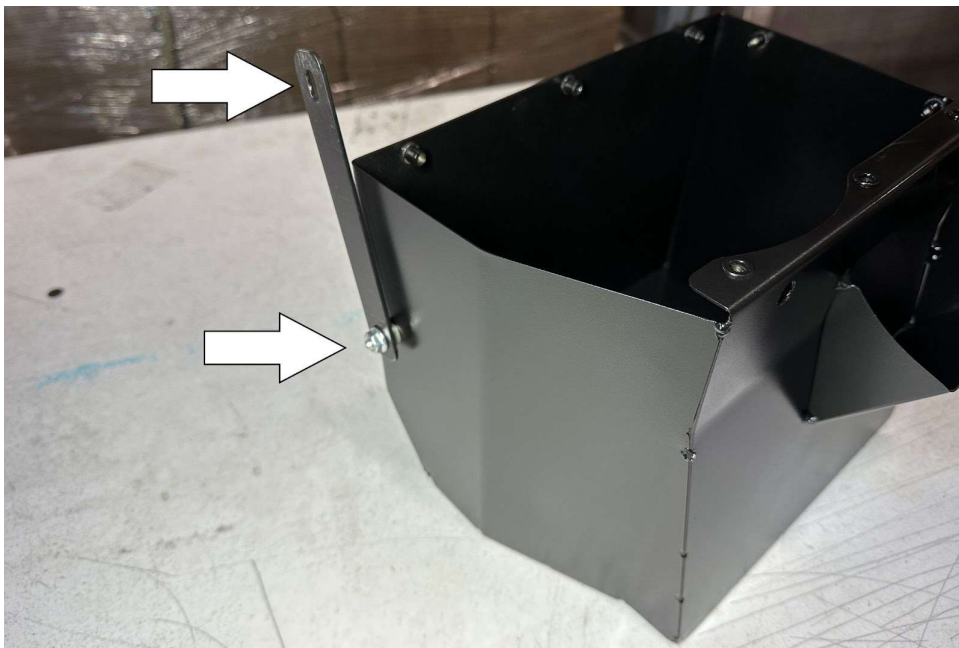
15. Secure the intake pipe to the "L" bracket using an M6 x 12mm bolt (1) and M6 washer (1). Position the intake pipe to clear from all obstructions before securing the hose clamp onto the hump coupler. Reconnect the electrical connection onto the MAF sensor.



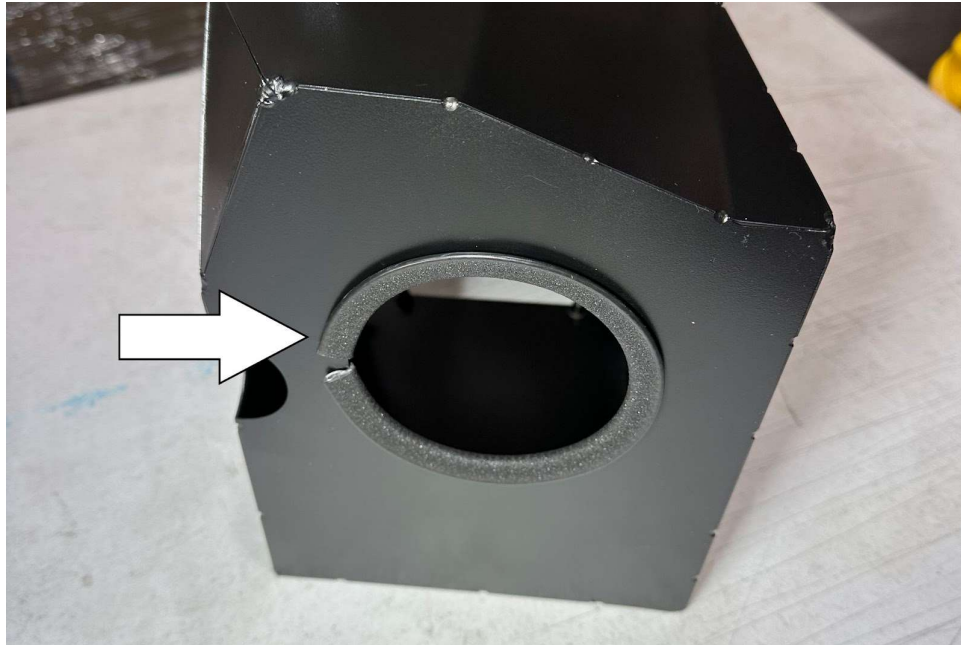
16. Install the taller "L" bracket in the location shown above with a provided M6 x 12mm bolt (1) and M6 washer (1).



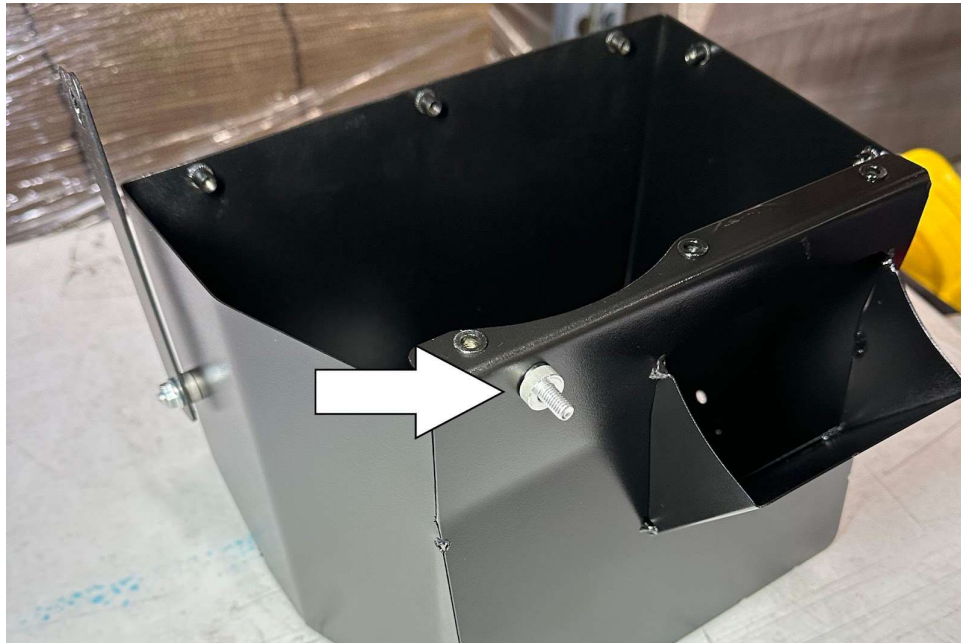
17. Install the provided M6 x 20mm bolt (1) and M6 washer (1) from the inside the heat shield followed by the 5mm spacer (1) shown in the image above.



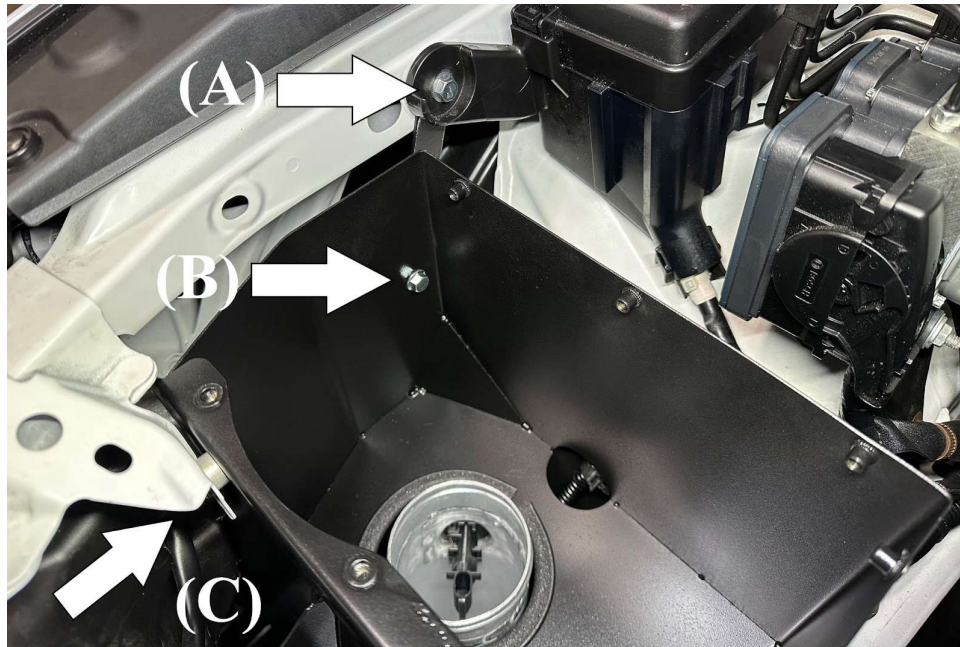
18. Place the straight bracket onto the spacer then hand tighten it with provided M6 nut (1) and M6 washer (1).



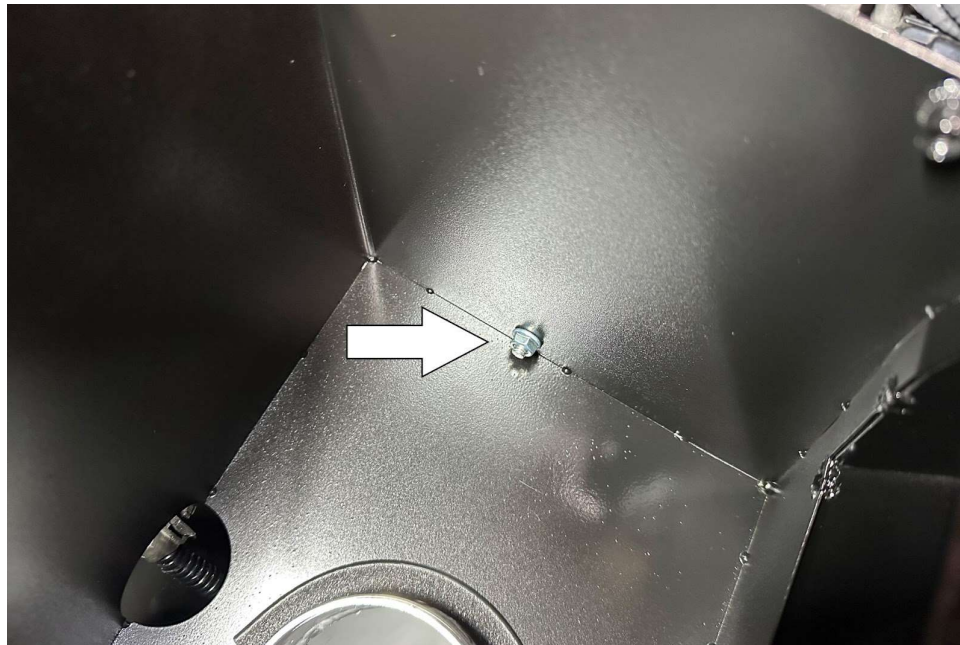
19. Install the 15 inches of thin edge trim onto the opening of the heat shield.



20. Install a provided M6 x 20mm bolt (1) and M6 washer (1) from the inside the heat shield followed by the 5mm spacer (1) shown in the image above.



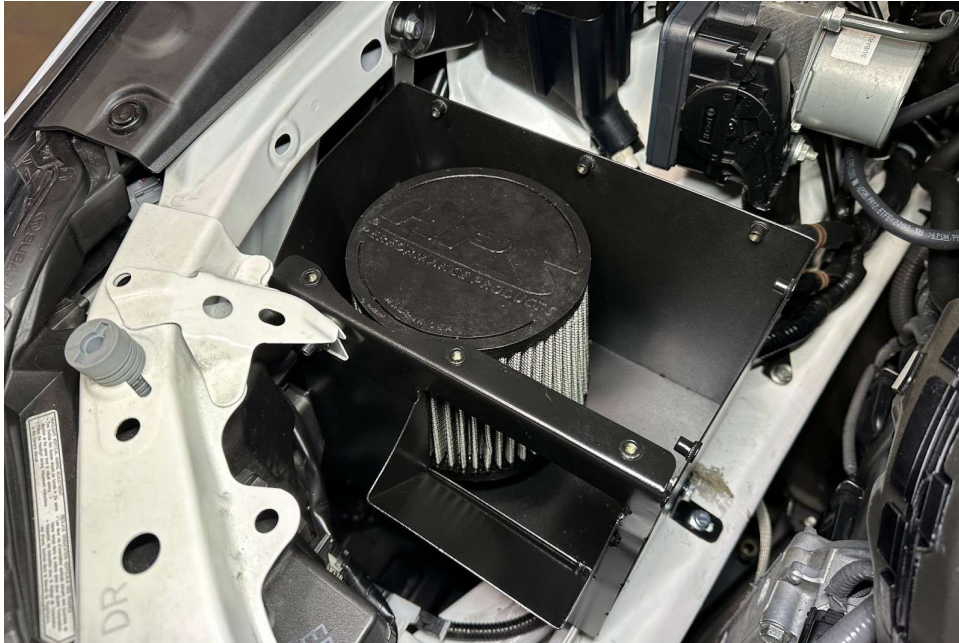
21. Remove the existing 10mm bolt securing the fuse box (A). Insert the HPS heat shield into the vehicle. Slide the straight bracket behind the fuse box, then secure the bracket with the factory bolt removed. Secure the heat shield to the factory mounting tab (C) with a provided M6 nut (1) and M6 washer (1). Fasten and secure the straight bracket to the heat shield (B).



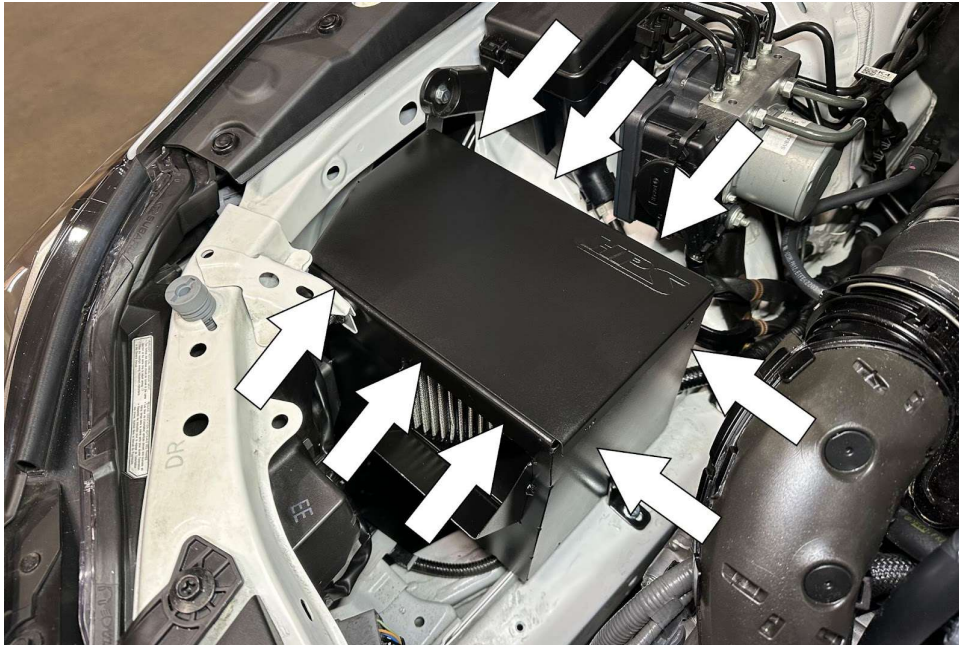
22. Secure the heat shield onto the "L" bracket installed on the frame rail using a provided M6 x 20mm bolt (1), M6 nut (1), and M6 washers (2).



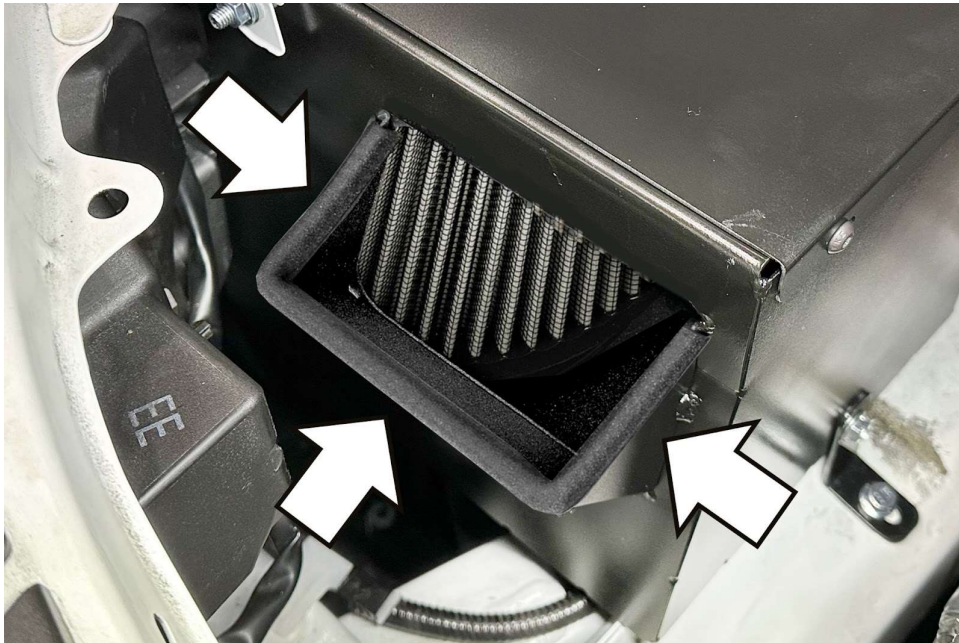
23. Insert the provided MAF sleeve into the intake pipe.



24. Install the provided HPS performance air filter using a ratchet and 8mm socket.

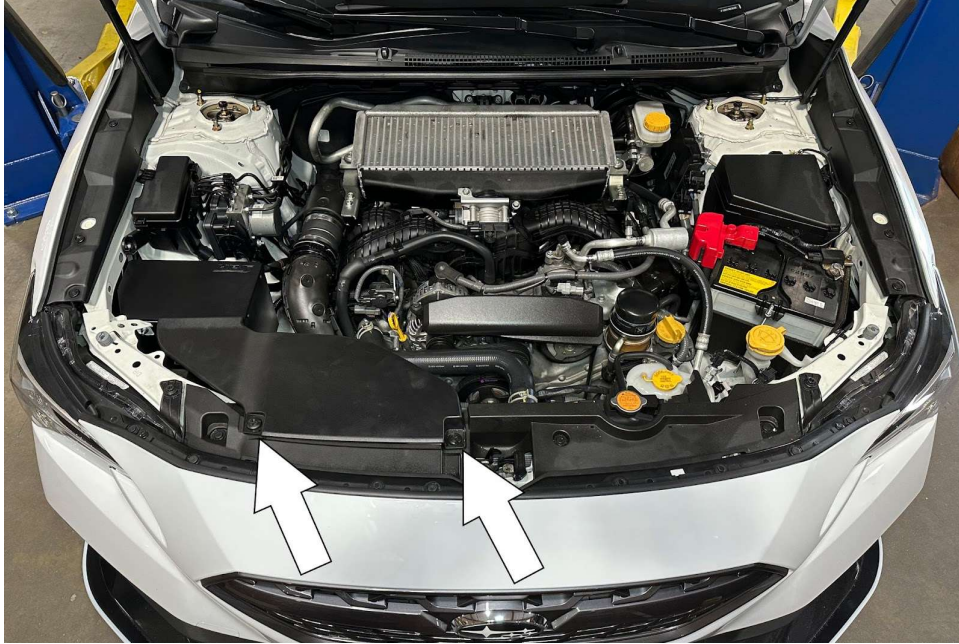


25. Install and secure the heat shield lid with the provided M5 bolts (8).



26. Install 9 inches of edge trim along the inlet of the heat shield.





27. Reinstall the factory air duct using the original plastic clips. Reinstall the plastic clips for the under tray.

## **FINAL STEPS**

Once the intake has been positioned, tighten all of the clamps and secure all of the parts.

Upon completion of the installation, reconnect the negative battery terminal before you start the engine. Double check to make sure everything is tight and properly positioned before starting the vehicle.

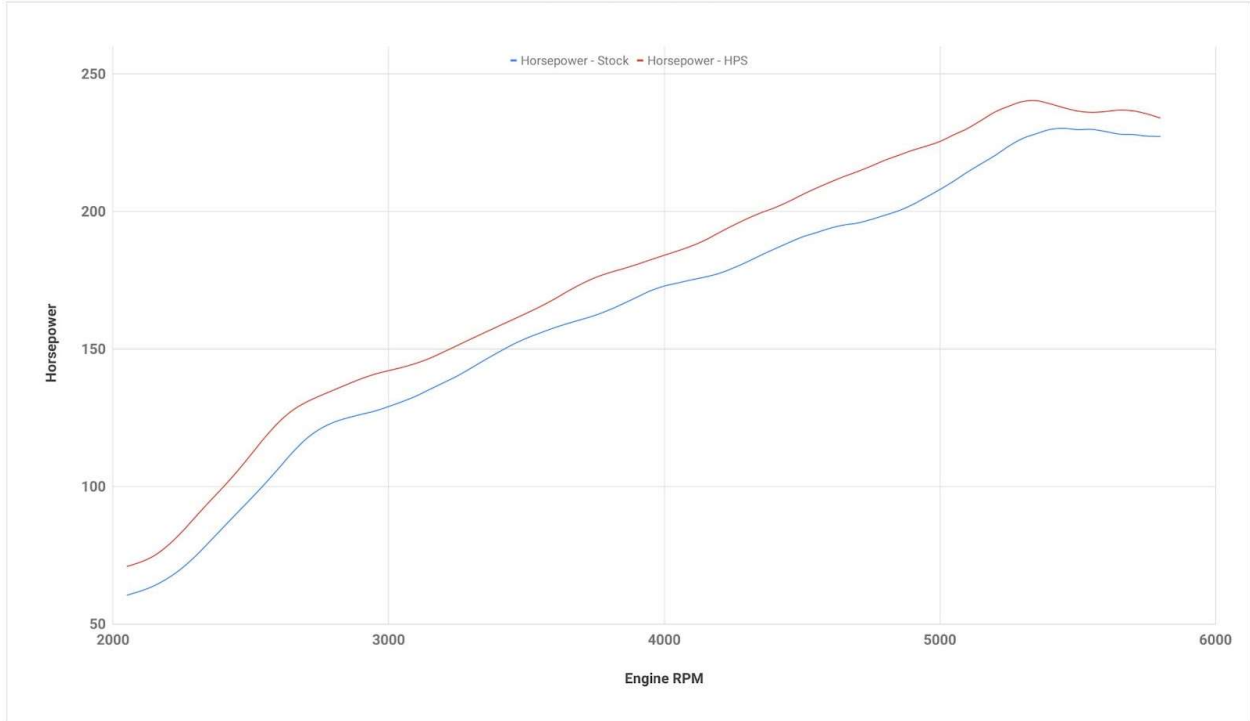
Start the engine. Let the car idle for 3 minutes. Perform a final inspection before driving. Listen carefully for any odd noises, rattles and/or air leaks prior to taking it for a test drive. If any problems arise go back and check the vacuum lines, hoses and clamps that may be causing leaks or rattles and correct the problem.

Periodically, recheck the alignment of the intake system and make sure there is proper clearance around and along the length of the intake. Failure to follow proper maintenance procedures may cause damage to the intake and will void the warranty.

HPS Performance Air Intake Kit with Heat Shield (827 Series)  
2022-2024 Subaru WRX 2.4L Turbo  
Part Number: 827-727

Maximum Horsepower Gains = 11.3 whp @ 4000 rpm

Tested Vehicle 2022 Subaru WRX 2.4L Turbo



HPS Performance Air Intake Kit with Heat Shield (827 Series)  
2022-2024 Subaru WRX 2.4L Turbo  
Part Number: 827-727

Maximum Torque Gains = 14.8 ft/lb @ 4000 rpm

Tested Vehicle 2022 Subaru WRX 2.4L Turbo

