



Performance Air Intake Kit

Part Number: 827-737

Acura 2004-2008 TSX 2.4L

Honda 2003-2006 Accord 2.4L

(Excluding SULEV and models with MAF sensor)

Installation Instructions

For technical inquiries please email us at tech@hpsperformanceproducts.com

In the email, please include the following information for faster response:

- Year / Make / Model / Engine of your vehicle.
- If it is a fitment issue, please include pictures showing the fitment problem.
- If there are missing parts, please list the part number(s) from the bill of materials on the 2nd page.
- Optional but recommended – Your contact phone number and preferred call back time.

You can also give us a call via 626-747-9200 for tech support Monday-Friday, 9:00am-5:00pm Pacific Time.

Bill of Materials

Kit Number: 827-737

| Line # | Description | Part Number | Qty |
|--------|-----------------------------------|------------------|-----------|
| 1 | Intake Pipe | 529-206 | 1 |
| 2 | "Z" Bracket | 530-208 | 1 |
| 3 | Heat Shield | 531-943 | 1 |
| 4 | HPS Performance Air Filter | HPS-4275 | 1 |
| 5 | 2.75" Straight Coupler x 2" Long | P3SC-275-L2 | 1 |
| 6 | T-bolt Clamp for 2.75" Hose | SSTC-73-81 | 2 |
| 7 | Embossed Clamp, 12mm - 22mm | EMSC-12-22 | 2 |
| 8 | Bolt, M6 x 1.0, 16mm Long | HW-B6-16 | 1 |
| 9 | M6 Flat Washer 16mm OD | HW-FW6L | 2 |
| 10 | M6 Flange Nut | HW-N6 | 1 |
| 11 | Rubber Vibration Mount 1" Tall | HW-RM6-100 | 1 |
| 12 | 10mm Rubber Grommet for 5/8" hole | HW-RG10 | 1 |
| 13 | 13mm EPDM Hose | EPDM-050 | 5 inches |
| 14 | Bubble Edge Trim | BUBBLE EDGE TRIM | 11 inches |
| 15 | Bubble Edge Trim | BUBBLE EDGE TRIM | 26 inches |

- Before installing any parts of this intake kit, please read the instructions thoroughly.
- Verify the contents of this intake kit before disassembling your vehicle.
- DO NOT INSTALL IF ANY PARTS ARE MISSING OR DAMAGED. CONTACT tech@hpsperformanceproducts.com IMMEDIATELY. WE ARE NOT RESPONSIBLE FOR ANY DAMAGE CAUSED DUE TO IMPROPER INSTALLATION.
- Installation requires moderate mechanical skills. A qualified mechanic is highly recommended.
- Do not attempt to install the intake kit while the engine is hot.
- This installation may require removal of coolant lines that may be hot.
- For technical inquiries, please email us at tech@hpsperformanceproducts.com

PLEASE READ CAREFULLY BEFORE INSTALLATION!

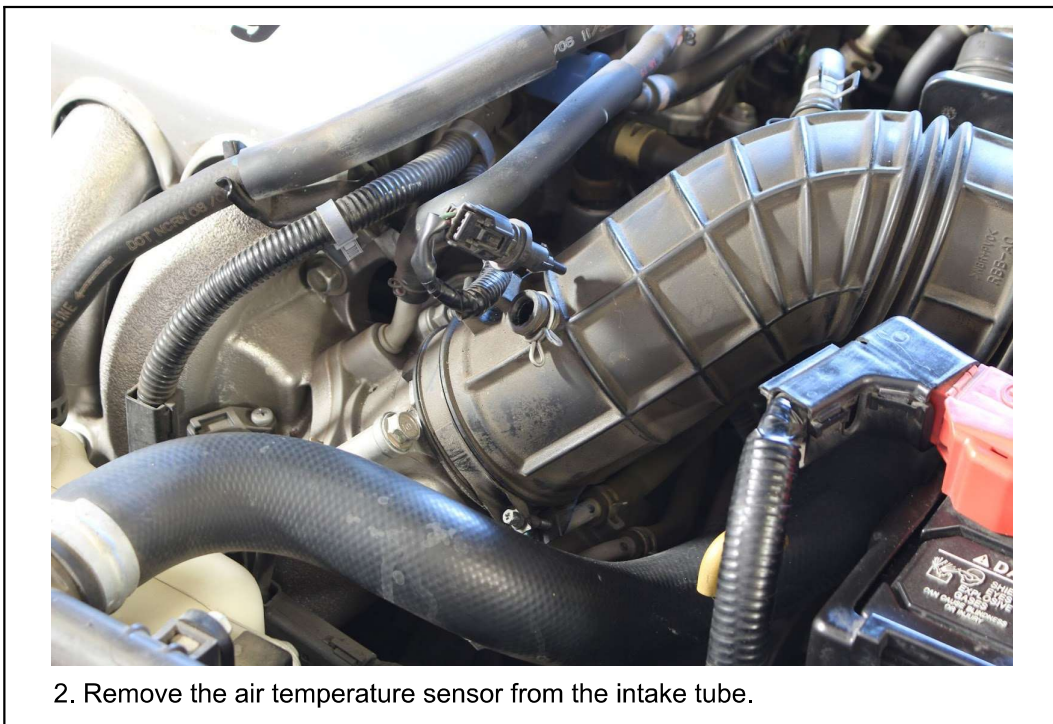
This installation is not for the novice customer. Install this product with EXTREME caution! Misuse of this product can destroy your engine! If you are not mechanically inclined, please have a professional automotive mechanic install this kit.

NOTE: HPS holds no responsibility for any engine damage that results from misuse of this product.

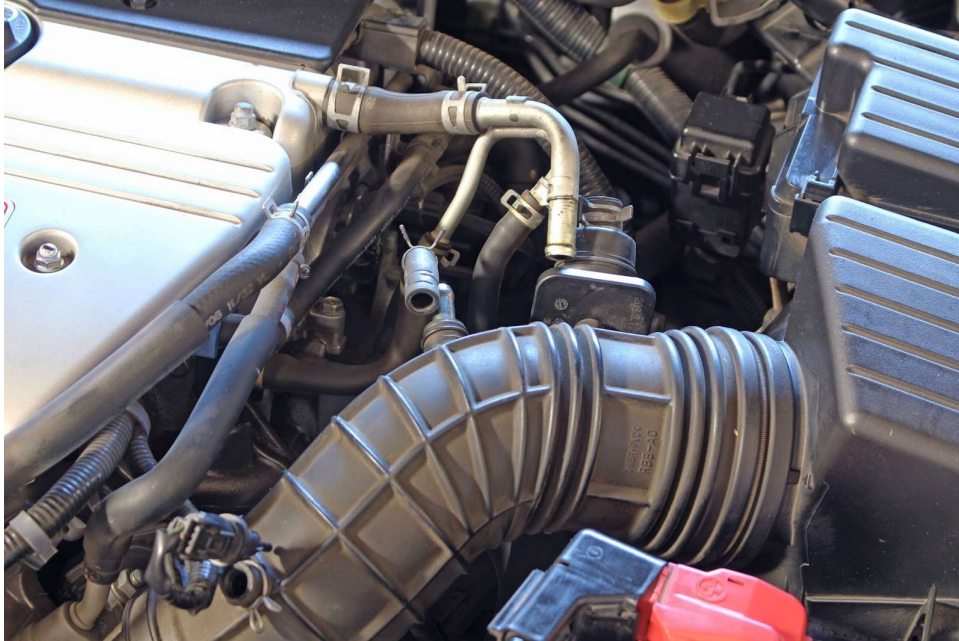
GETTING STARTED

1. Turn the ignition OFF and disconnect the vehicle's negative battery cable. If the engine has run within the past two hours let it cool down.

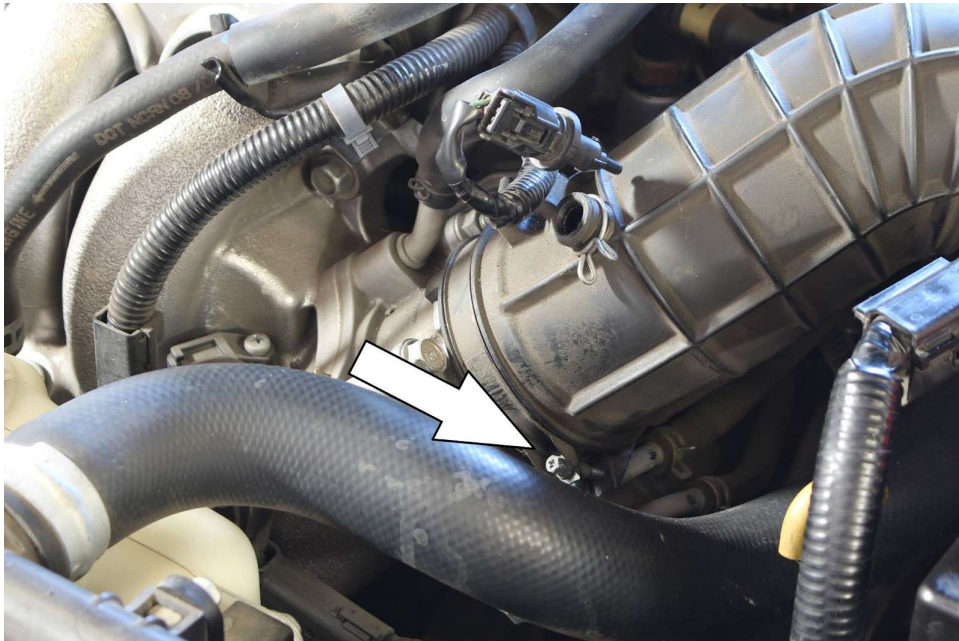
NOTE: Disconnecting the negative battery cable erases pre-programmed electronic memories. Write down all memory settings before disconnecting the negative battery cable. Some radios will require an anti-theft code to be entered after the battery is reconnected. The anti-theft code is typically supplied with your owner's manual. In the event your vehicle's anti-theft code cannot be recovered, contact an authorized dealership to obtain your vehicle's anti-theft code. We also highly recommend NOT discarding any stock parts after the installation.



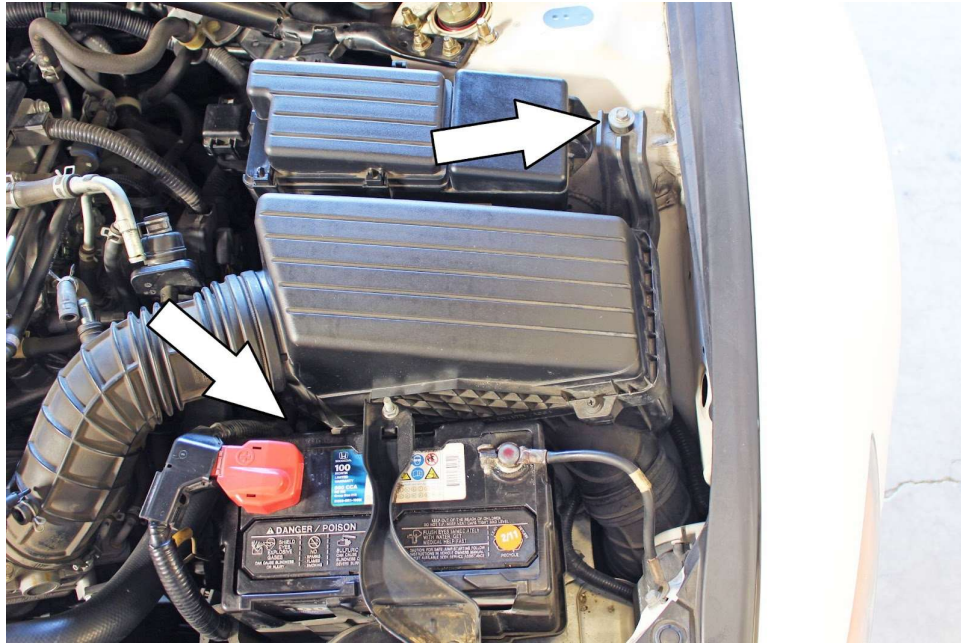
2. Remove the air temperature sensor from the intake tube.



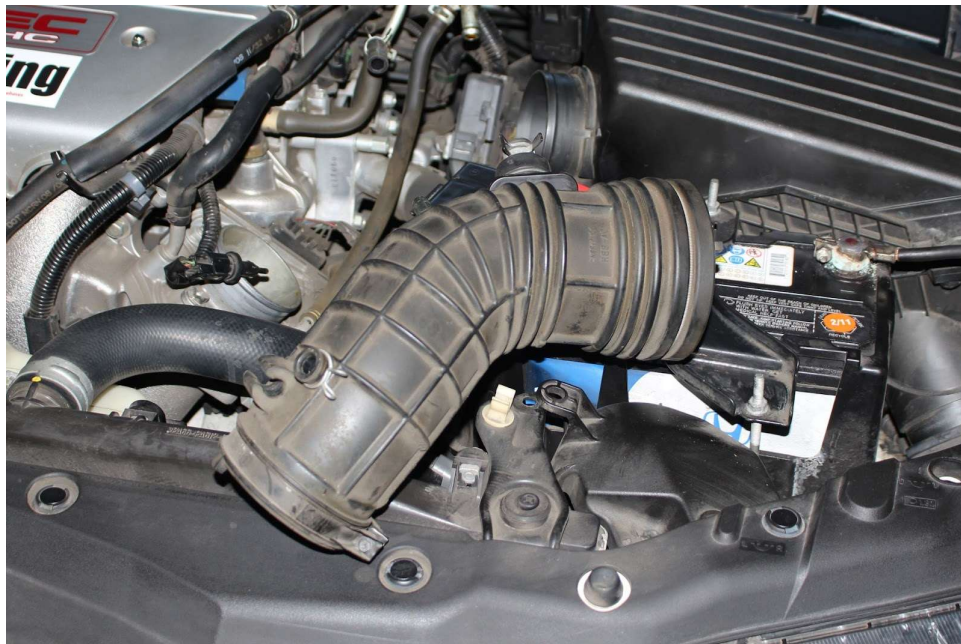
3. Disconnect the breather tube and idle air hose as shown in the image above.



4. Loosen the hose clamp on the throttle body using a 5.5mm socket or a Phillips head screwdriver.



5. Remove the 2 bolts indicated above to loosen the air box from the chassis.



6. Disconnect and remove the stock intake tube from the throttle body and air box.



7. Carefully lift up the air box and separate it from the rubber air duct located at the bottom.



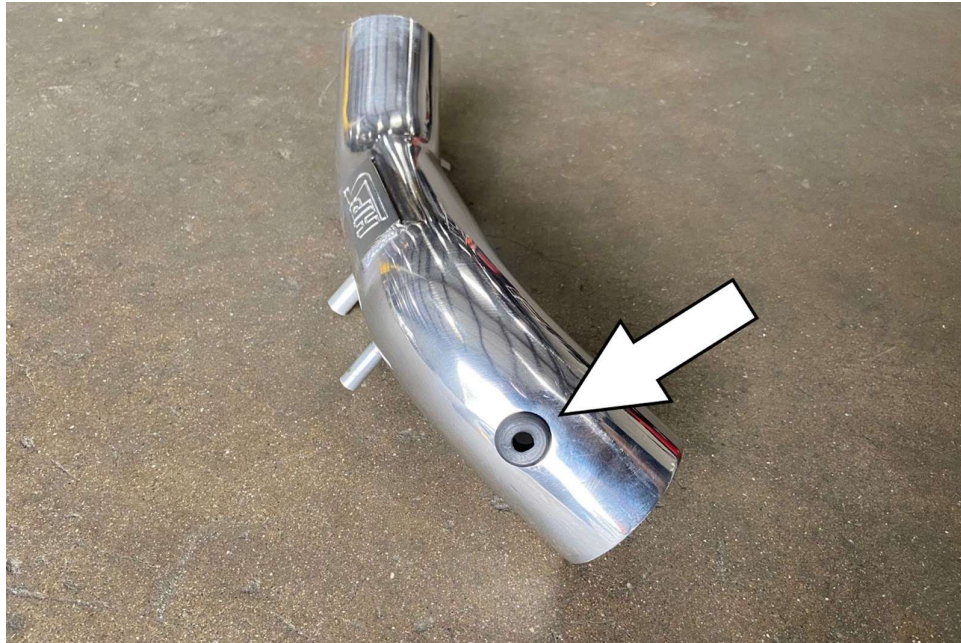
8. Remove the wire harness attached to the bottom of the air box. Remove the air box from the engine bay.



9. Install the straight silicone coupler and T-bolt clamp onto the throttle body.



10. Install the 1" tall rubber vibration mount onto the factory air box mount located behind the battery.



11. Install the provided rubber grommet onto the intake pipe.



12. Install the intake bracket onto the intake pipe using the provided M6 x 16mm bolt and washer. Leave the bracket loose to allow for adjustments.



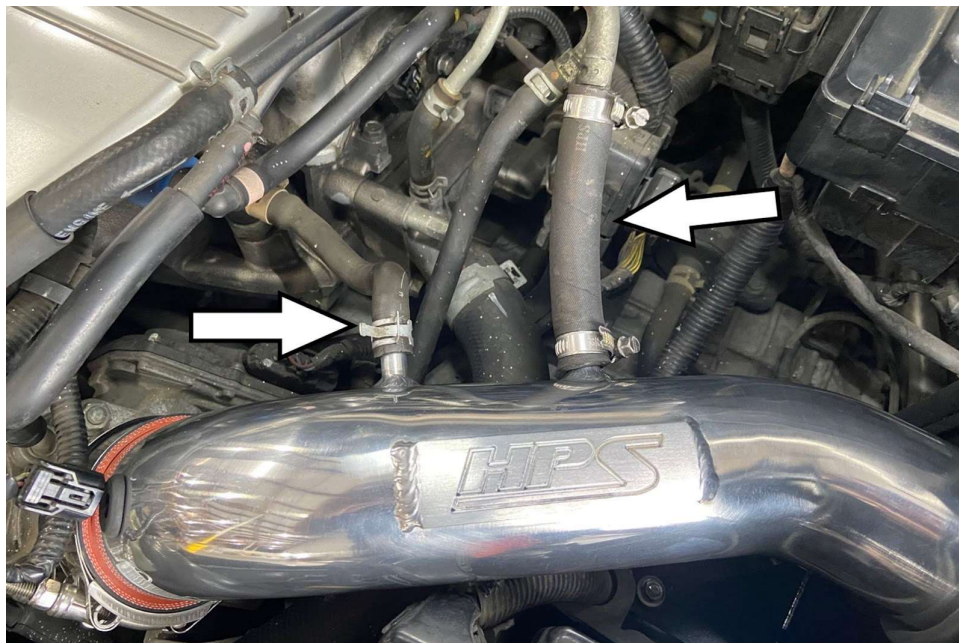
13. Install the provided bubble edge trim onto the heat shield as shown in the image above.



14. Place the heat shield onto the vibration mount.



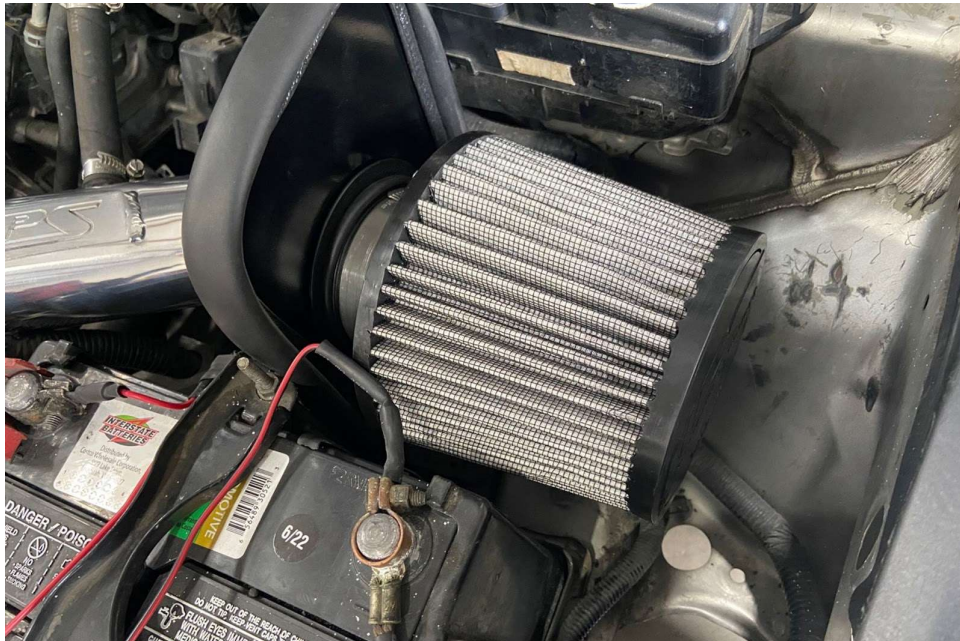
15. Insert the intake pipe with the second T-bolt clamp into the coupler and secure it in place. Secure the intake bracket using the provided M6 nut and washer onto the vibration mount.



16. Connect the provided 5" long EPDM hose onto the stock breather tube. Slide the two EMSC clamps over the hose and connect the opposite end of the hose to the HPS intake pipe. Fasten the clamps to secure the hose. Connect the factory idle air hose to the HPS intake pipe.



17. Insert the factory air temperature sensor into the grommet.



18. Install the provided HPS performance air filter.

FINAL STEPS

Once the intake has been positioned, tighten all of the clamps and secure all of the parts.

Upon completion of the installation, reconnect the negative battery terminal before you start the engine. Double check to make sure everything is tight and properly positioned before starting the vehicle.

Start the engine. Let the car idle for 3 minutes. Perform a final inspection before driving. Listen carefully for any odd noises, rattles and/or air leaks prior to taking it for a test drive. If any problems arise go back and check the vacuum lines, hoses and clamps that may be causing leaks or rattles and correct the problem.

Periodically, recheck the alignment of the intake kit and make sure there is proper clearance around and along the length of the intake. Failure to follow proper maintenance procedures may cause damage to the intake and will void the warranty.



Also available for Acura 2004-2008 TSX 2.4L



HPS Silicone Radiator Hose Kit

[Part Number 57-1384](#)



HPS Magnetic Drain Plug

[Part Number MDP-M14x150](#)

**Contact an authorized HPS Performance dealer or
visit us at hpsperformanceproducts.com for more details**