



Performance Oil Catch Can Kit

Part Number: 860-006

Subaru 2015-2019 Legacy 2.5L
Subaru 2015-2019 Outback 2.5L

Installation Instructions

For technical inquiries please email us at tech@hpsperformance.com

In the email, please include the following information for faster response:

- Year / Make / Model / Engine of your vehicle
- If it is a fitment issue, please include pictures showing the fitment problem
- If there are missing parts, please list the part number(s) from the bill of materials on the 2nd page
- Optional but recommended – Your contact phone number and preferred call back time

You can also give us a call via 626-747-9200 for tech support Monday-Friday, 9:00am-5:00pm Pacific Time.

Bill of Materials

Kit Number: 860-006

Line #	Description	Part Number	Qty
1	Oil Catch Can	OCC-14	1
2	Oil Catch Can Bracket	OCC-BRKT-009	1
3	Bolt, M5 x 0.8, 10mm Long	HW-B5-10	3
4	Straight Aluminum Adapter, AN-6 to 16mm x 1.50	AN816-6-M1615	2
5	Push-On Aluminum Hose End, AN-6, 90 Degree	150-9006	2
6	Bolt, M6 x 1.0, 16mm Long	HW-B6-16	3
7	Flat Washer, M6, 16mm OD	HW-FW6L	3
8	Flange Nut, M6	HW-N6	1
9	Push On Hose, AN-6	150-06	35 inches
10	Push On Hose, AN-6	150-06	35 inches
11	Fuel Injection Clamp, 14mm - 16mm	FIC-14	2

- **Before installing any parts of this oil catch can kit, please read the instructions thoroughly.**
- **Verify the contents of this oil catch can kit before disassembling your vehicle.**
- **DO NOT INSTALL IF ANY PARTS ARE MISSING OR DAMAGED. CONTACT tech@hpsperformance.com IMMEDIATELY. WE ARE NOT RESPONSIBLE FOR ANY DAMAGE CAUSED DUE TO IMPROPER INSTALLATION.**
- **Installation requires moderate mechanical skills. A qualified mechanic is highly recommended.**
- **Do not attempt to install the catch can while the engine is hot.**
- **This installation may require removal of coolant lines that may be hot.**
- **For technical inquiries, please email us at tech@hpsperformance.com**

PLEASE READ CAREFULLY BEFORE INSTALLATION!

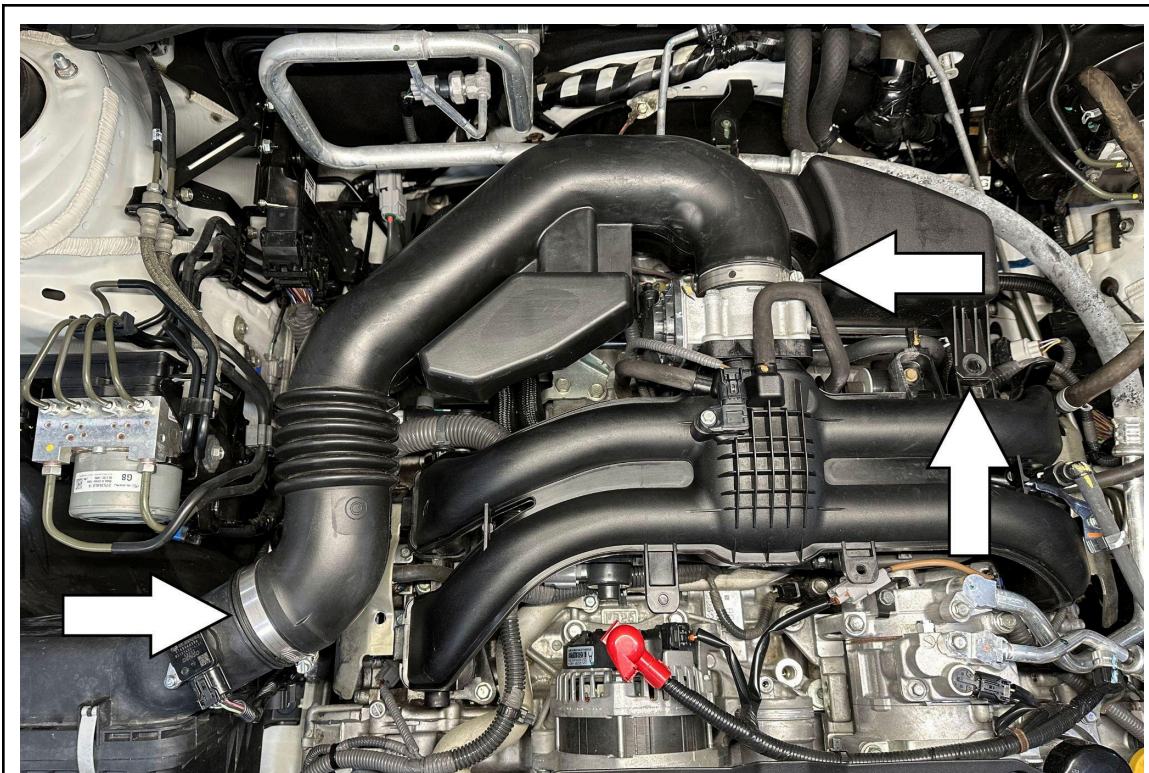
This installation is not for the novice customer. Install this product with EXTREME caution! Misuse of this product can destroy your engine! If you are not mechanically inclined, please have a professional automotive mechanic install this kit.

NOTE: HPS holds no responsibility for any engine damage that results from misuse of this product.

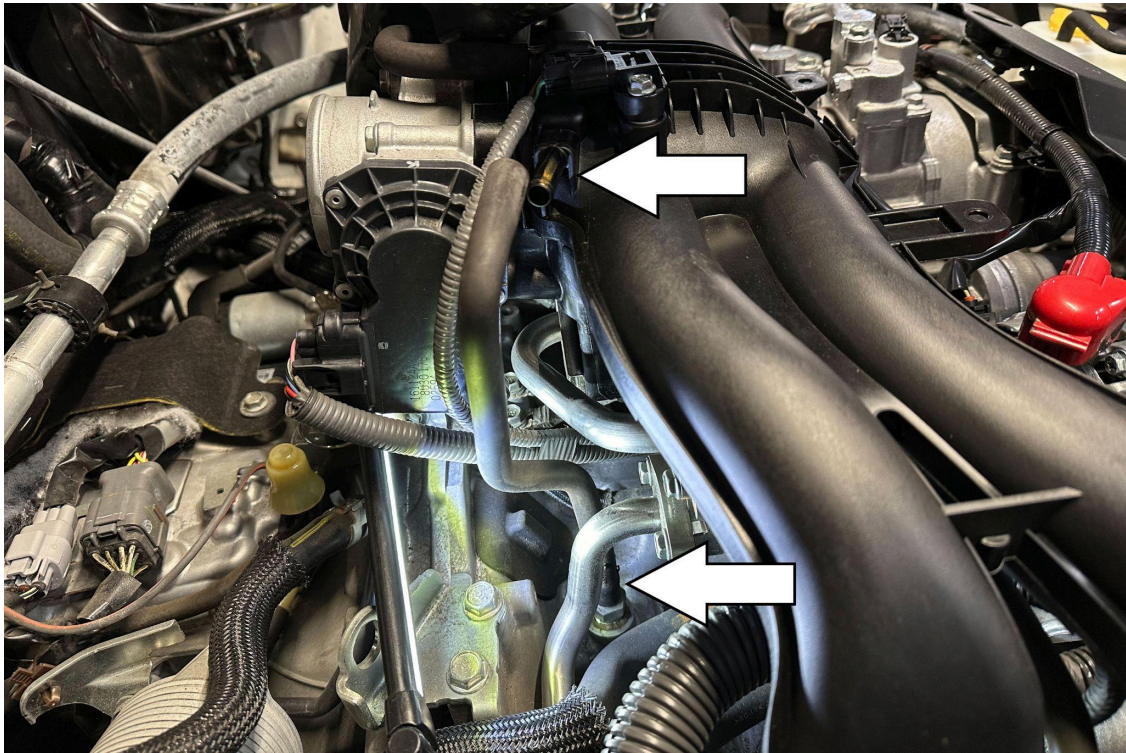
GETTING STARTED

1. Turn the ignition OFF and disconnect the vehicle's negative battery cable. If the engine has run within the past two hours let it cool down.

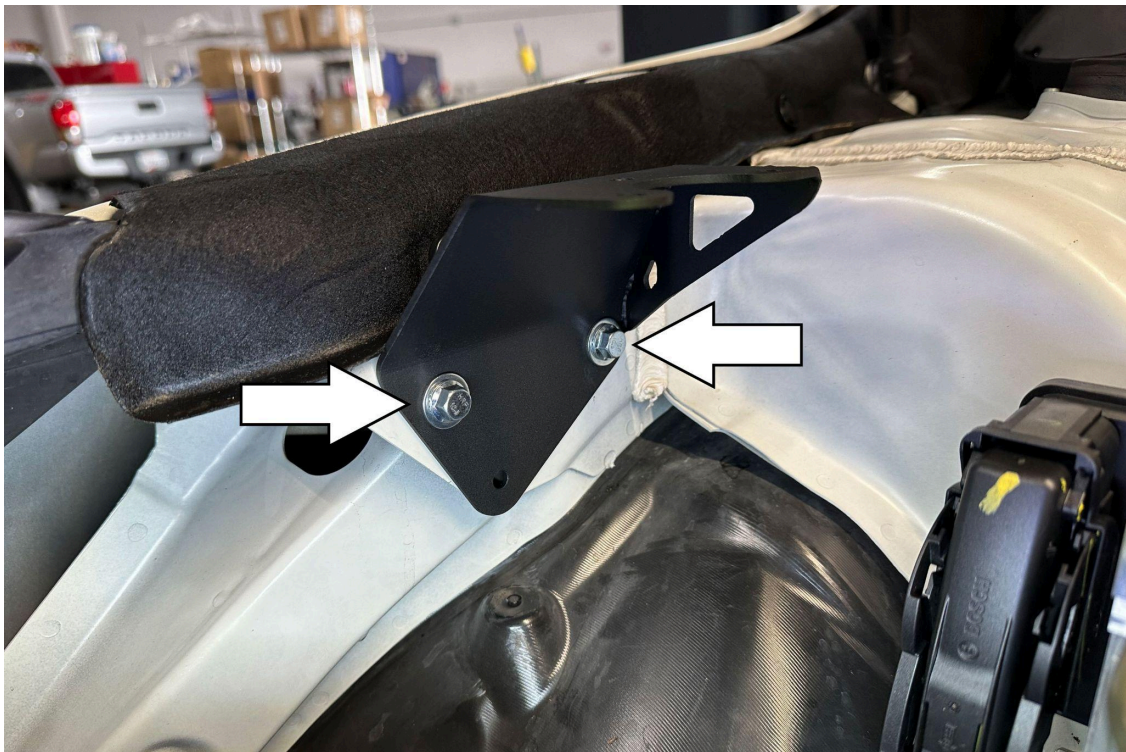
NOTE: Disconnecting the negative battery cable erases pre-programmed electronic memories. Write down all memory settings before disconnecting the negative battery cable. Some radios will require an anti-theft code to be entered after the battery is reconnected. The anti-theft code is typically supplied with your owner's manual. In the event your vehicle's anti-theft code cannot be recovered, contact an authorized dealership to obtain your vehicle's anti-theft code. We also highly recommend NOT discarding any stock parts after the installation.



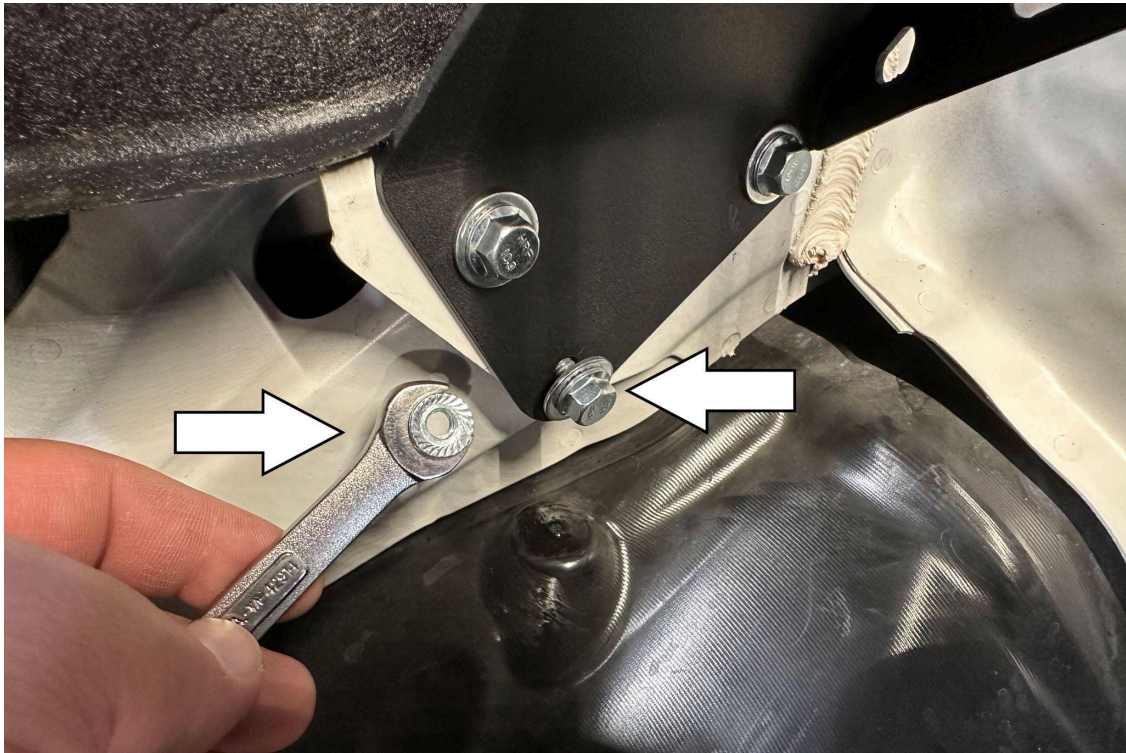
2. Loosen the two intake clamps located at the throttle body and at the intake air box. Remove the plastic clip mounted on the intake manifold. Uninstall the intake tube and set it aside for the duration of the installation.



3. Remove the original positive crankcase ventilation (PCV) hose.



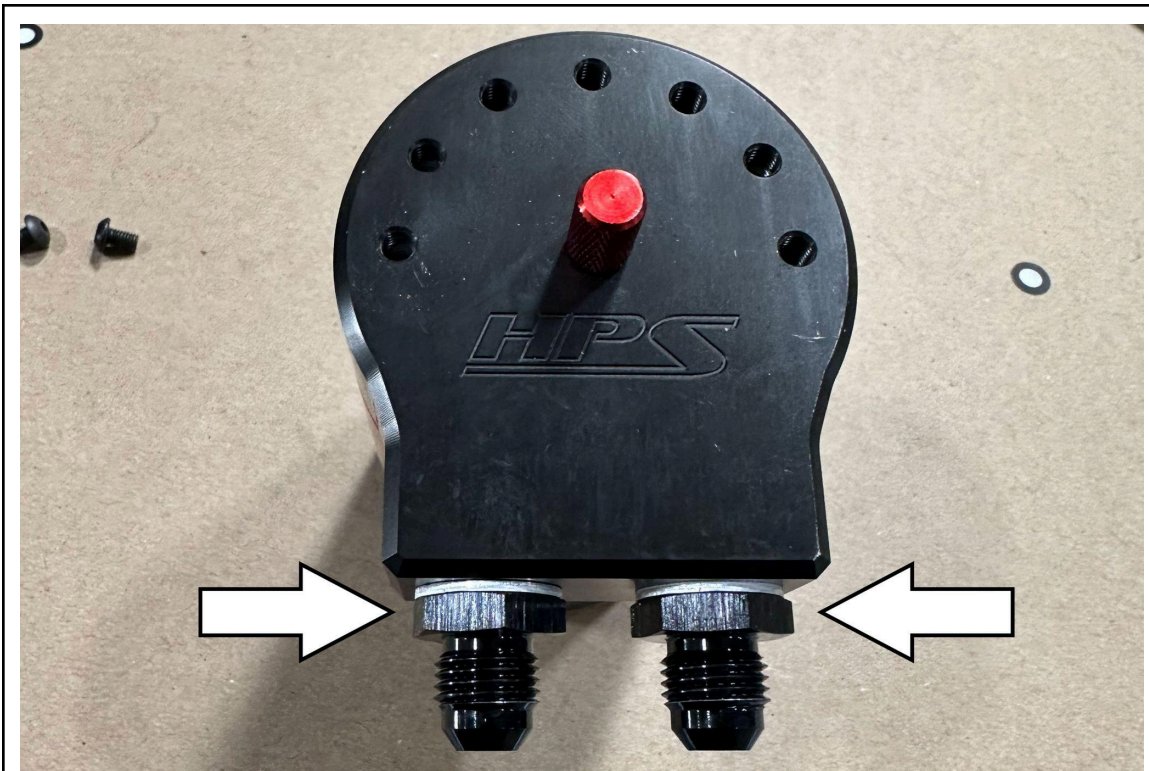
4. Install the oil catch can bracket onto the passenger side inner fender using two provided M6 bolts and two washers.



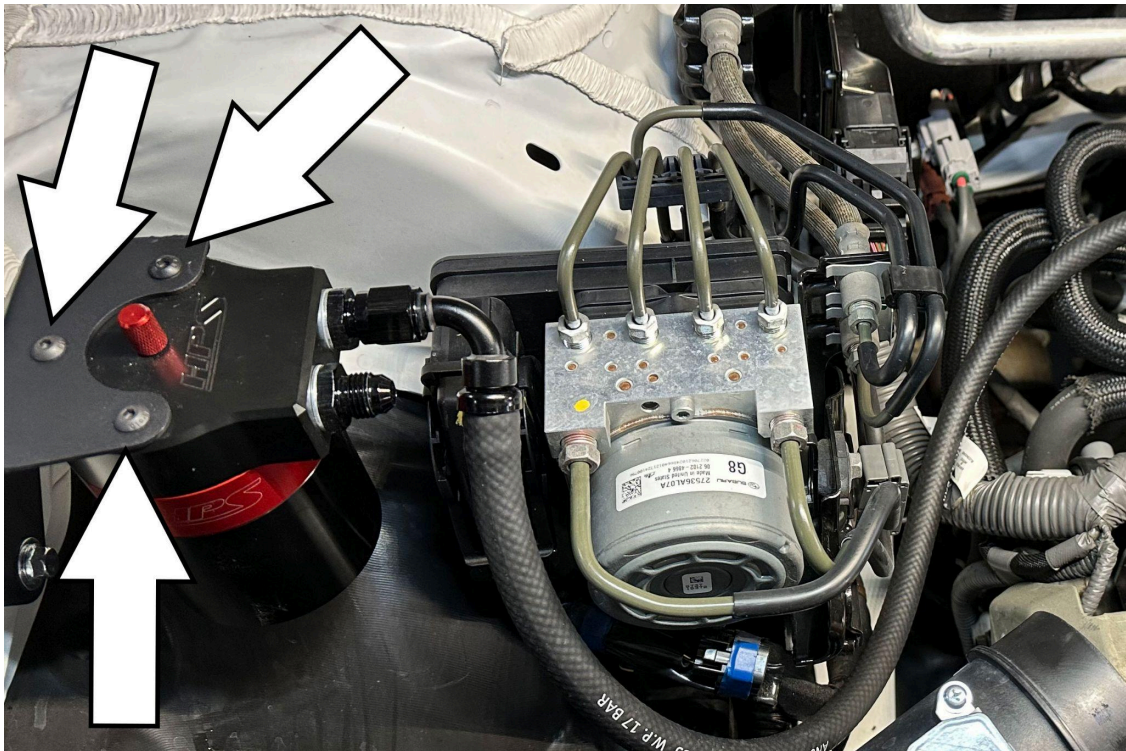
5. Carefully hold the provided M6 nut behind the third hole using a 10mm wrench and install the third M6 bolt and washer to finish mounting the oil catch can bracket.



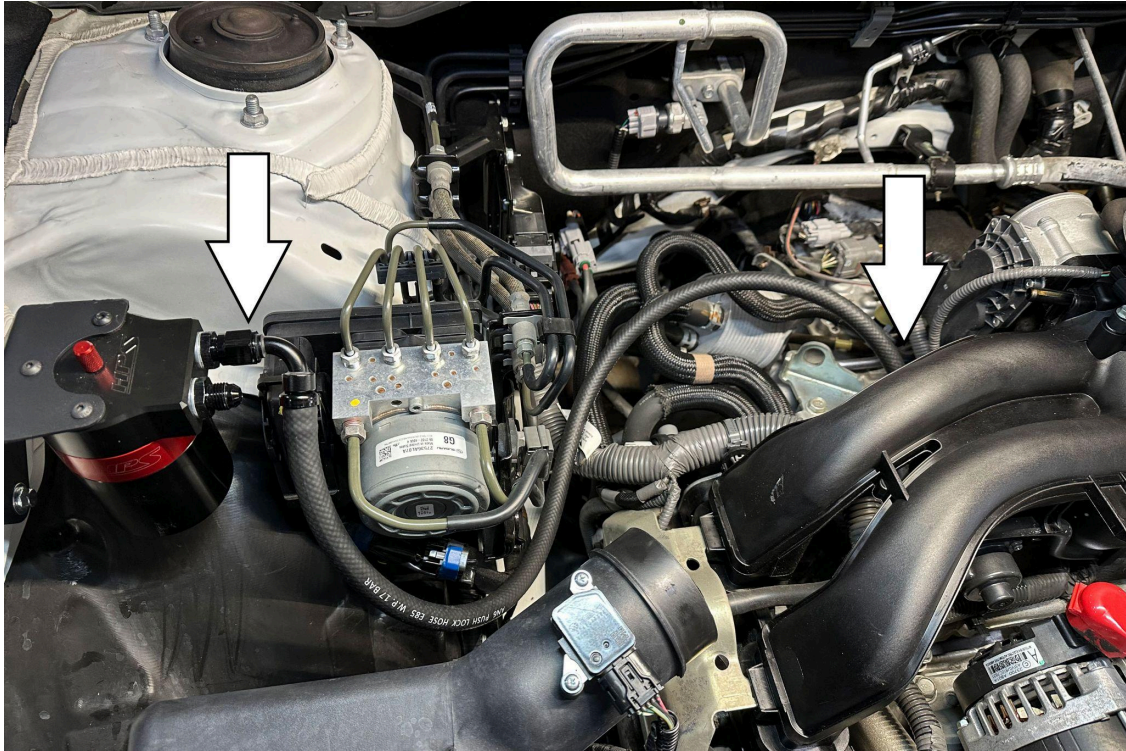
6. Assemble the hoses by connecting one 90 degree hose end to each AN-6 push on hose.



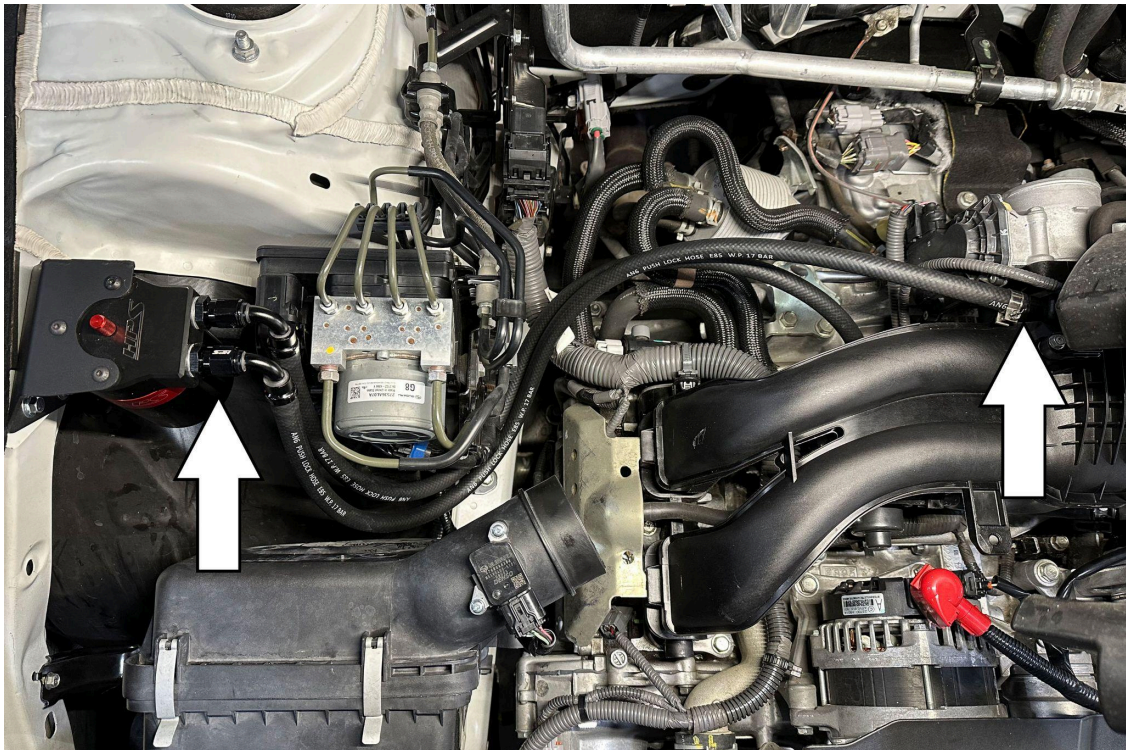
7. Install the two provided AN-6 to 16mm x 1.50 adapters to the oil catch can. Make sure to install the two crush washers between the AN fitting and the oil catch can.



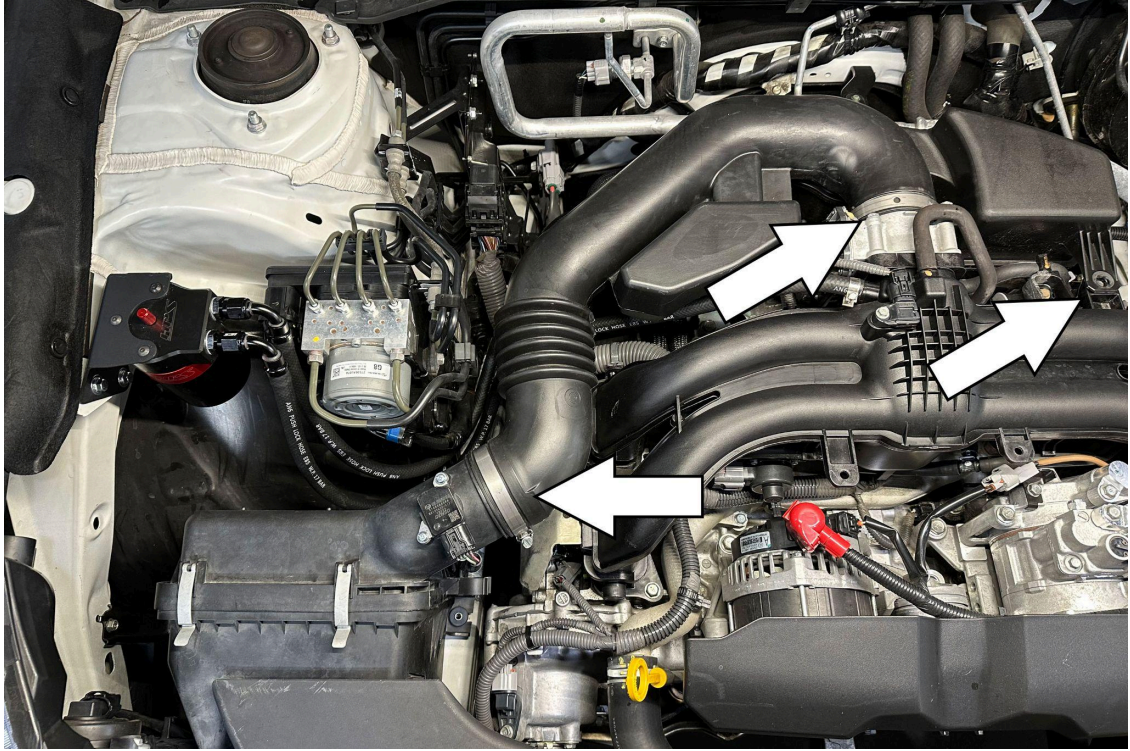
8. Mount the oil catch can to the bracket using the three provided M5 bolts.



9. Secure the assembled hose to the oil catch can and install the other end on the positive crank ventilation valve as shown in the image above. Use the provided FIC-14 clamp to secure the hose to the PCV valve.



10. Secure the second assembled hose to the oil catch can and install the other end to the original vacuum port next to the throttle body. Use the second provided FIC-14 clamp to secure the hose to the vacuum port.



11. Reinstall the intake tube.

FINAL STEPS

Upon completion of the installation, reconnect the negative battery terminal before you start the engine. Double check to make sure everything is tight and properly positioned before starting the vehicle.

Start the engine. Let the car idle for 3 minutes. Perform a final inspection before driving. Listen carefully for any odd noises, rattles and/or air leaks prior to taking it for a test drive. If any problems arise go back and check the vacuum lines, hoses and clamps that may be causing leaks or rattles and correct the problem.

Ensure that the dipstick on the HPS oil catch can is fully seated. Failure to install the dipstick properly will result in a check engine light and poor performance.



Also available for
Subaru 2015-2019 Legacy 2.5L & Outback 2.5L



HPS Performance Front Strut Bar
Part Number [42-107](#)



HPS Performance Panel Air Filter
Part Number [HPS-452421](#)



HPS Performance Stainless Steel Magnetic
Oil Drain Plug
Part Number [MDP-M16x150](#)

Contact an authorized HPS Performance dealer or
visit us at hpsperformance.com for more details